

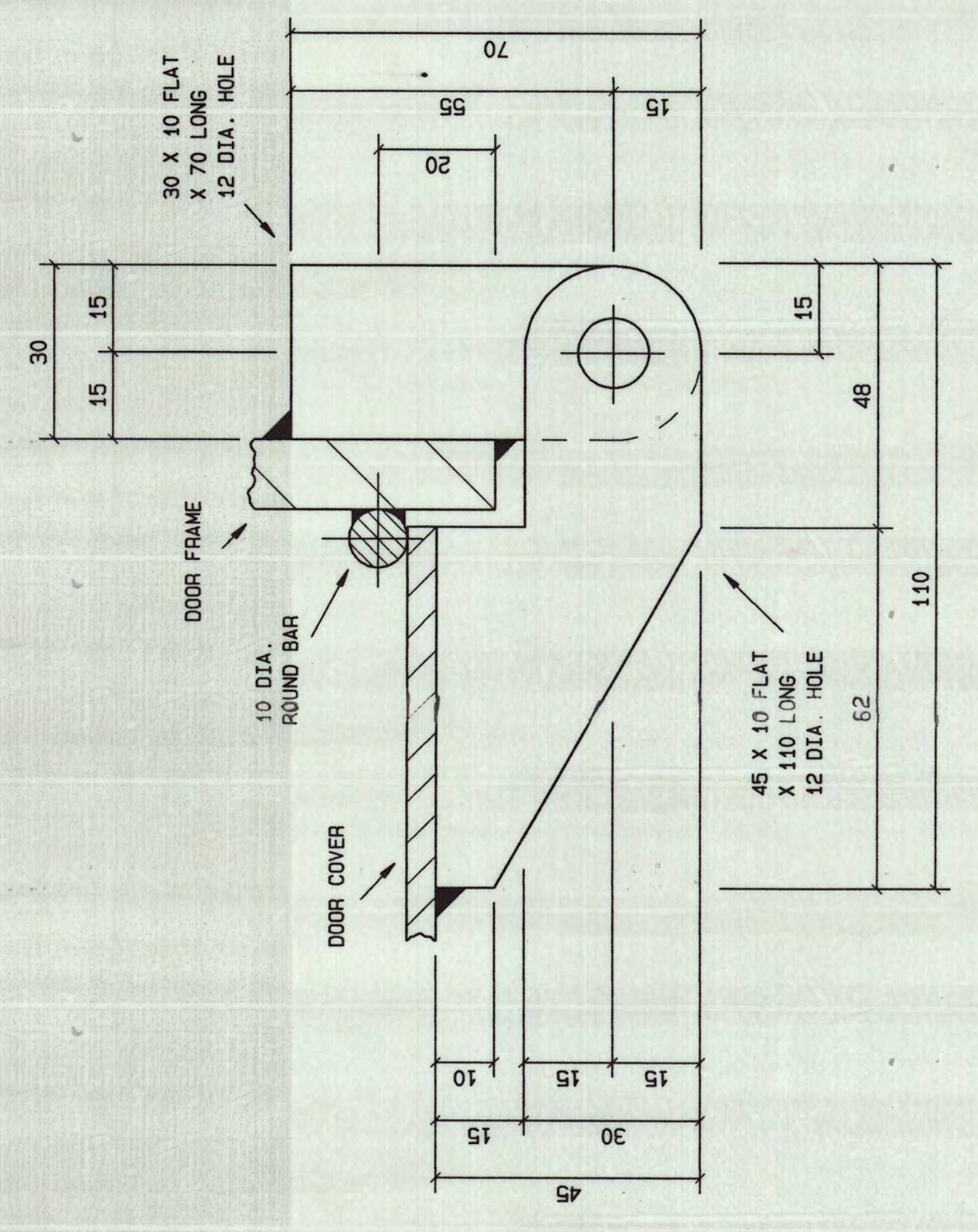
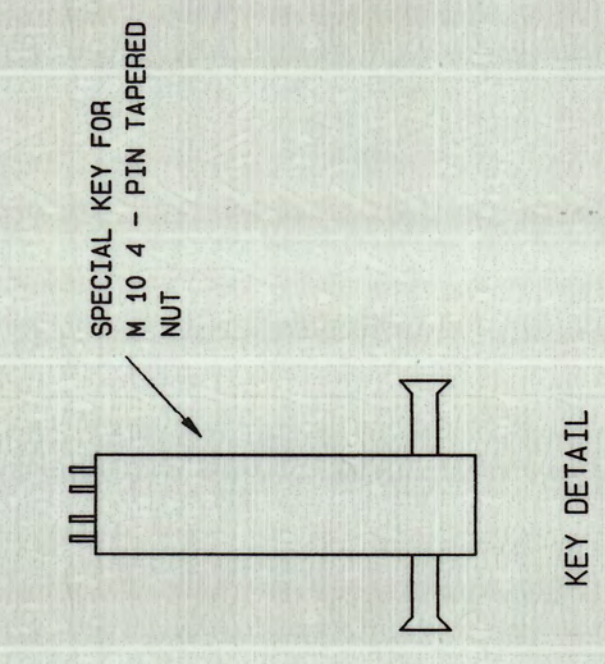
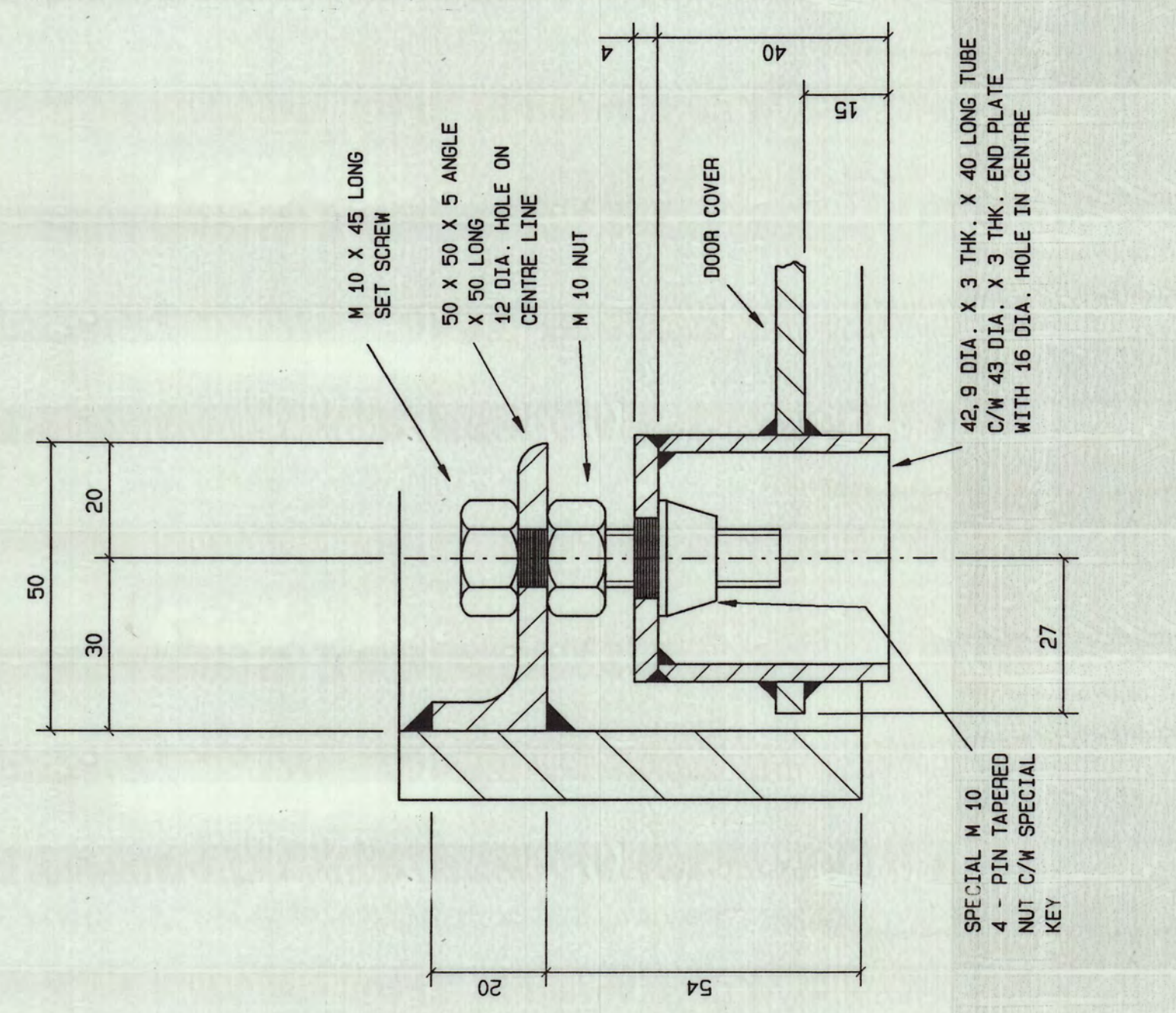
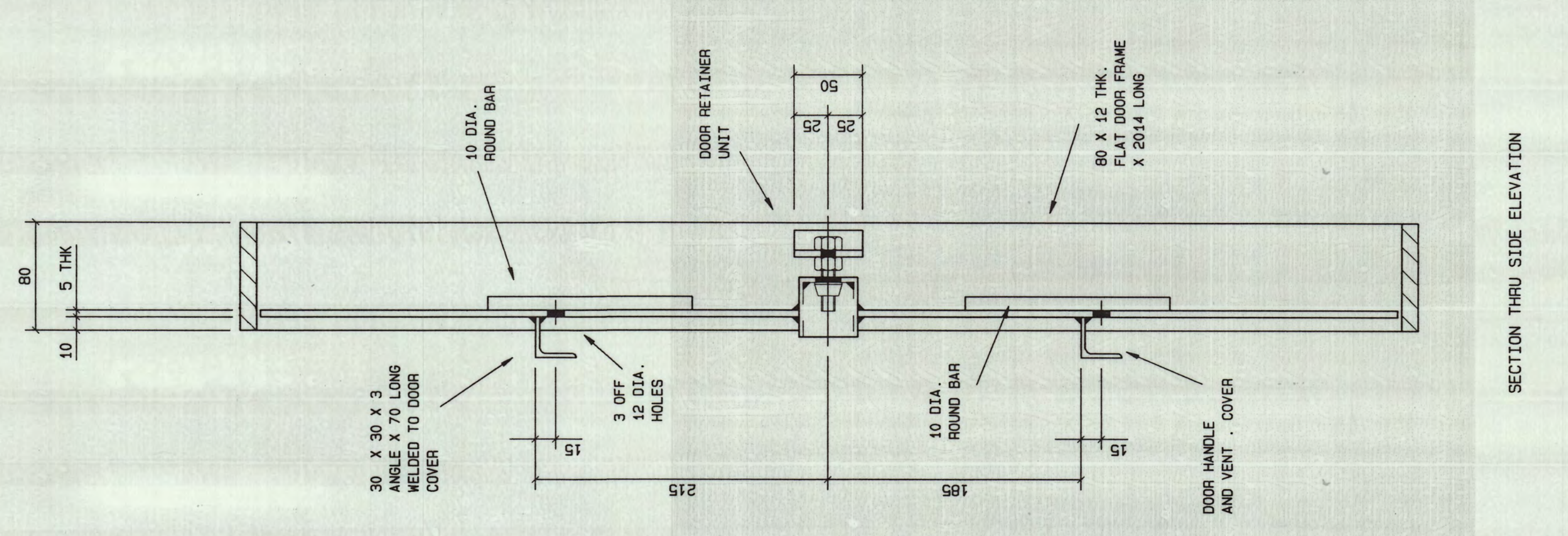
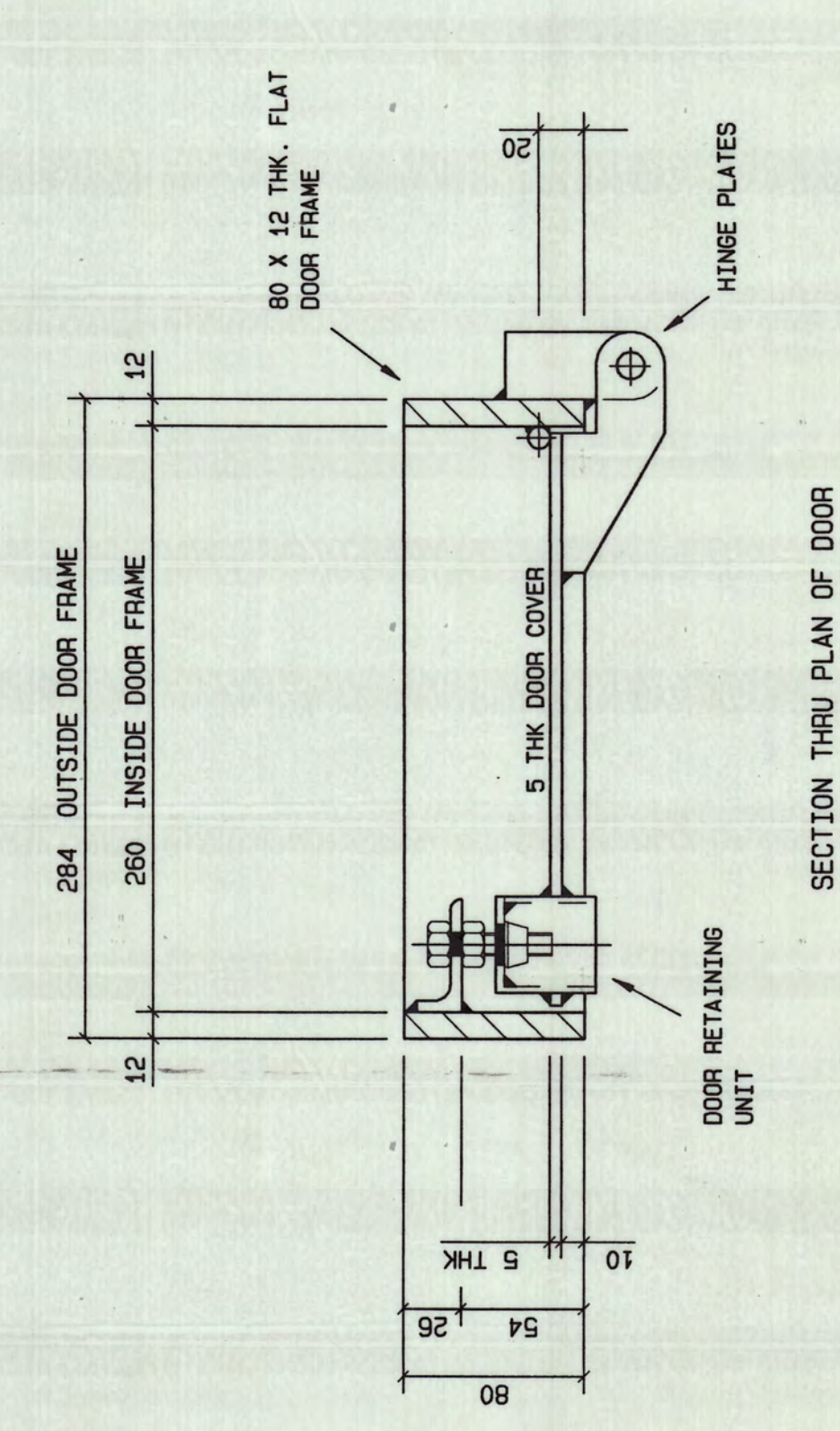
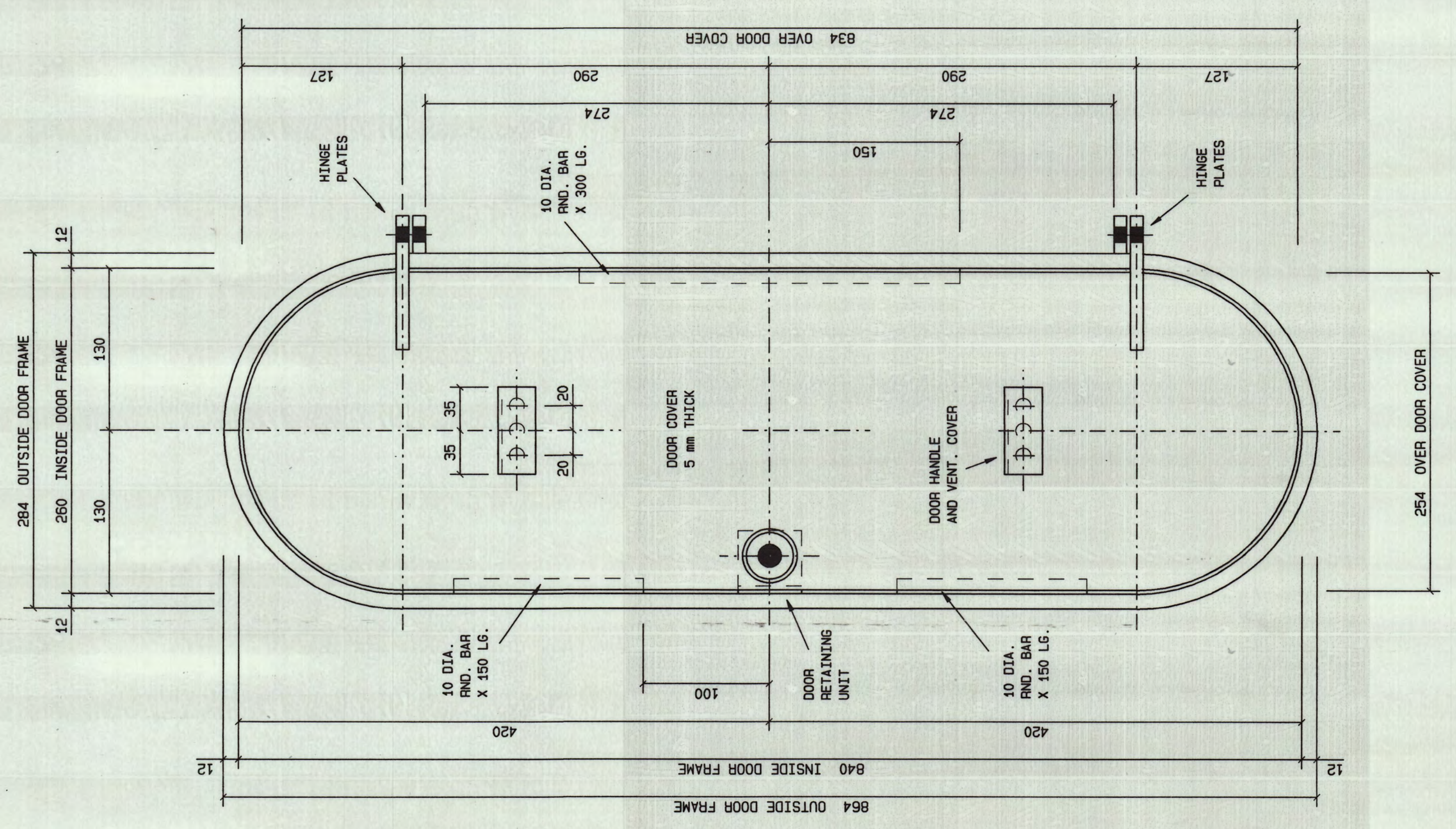
NOTE :

- ALL MATERIAL = 300 MA
- ALL STEELWORK TO BE HOT DIP GALV'D
- TO S68 783
- WELDING ON INSIDE SHAFT OF SLIP JOINT TO BE BRITISH FOR LENGTH OF SLIP
- LOGS OF BOTTOM END OF SLIP JOINT TO BE MARKED ON POLE
- POLE LIFTEN MARK TO BE STAMPED ON OUTSIDE OF MAST SHAFT BETWEEN BOTTOM OF DOOR AND BASE PLATE
- CHANGING OF DETAILS OR DIMENSIONS ARE NOT ALLOWED UNDER ANY CIRCUMSTANCES

PROJECT	PORTNET - CAPE TOWN ( 1 OFF ) 30 M. HIGHBOW MAST	
TITLE	GENERAL ARRANGEMENT	
THIS DRAWING IS THE PROPERTY OF GENERAL STRUCTURAL ENGINEERING AND IS NOT TO BE COPIED OR USED WITHOUT THEIR PERMISSION		
DRAWN	A.R.	SCALE
CHECKED	APR. '97	N. T. S.
WELDING TERMS AND SYMBOLS TO S.A.B.S. 044 PART 2 1963		COST CODE
SHIP PAINT		CONTRACT NO
BLAST CLEAN		100903
SITE PAINT		REVISION
OR TO ENGINEER'S SPECIFICATIONS		2
UNLESS OTHERWISE NOTED		DRAWING NO
BOLTS * * * * *		1
HOLES * * * * *		

TBH.106.R1-3016 SH.1

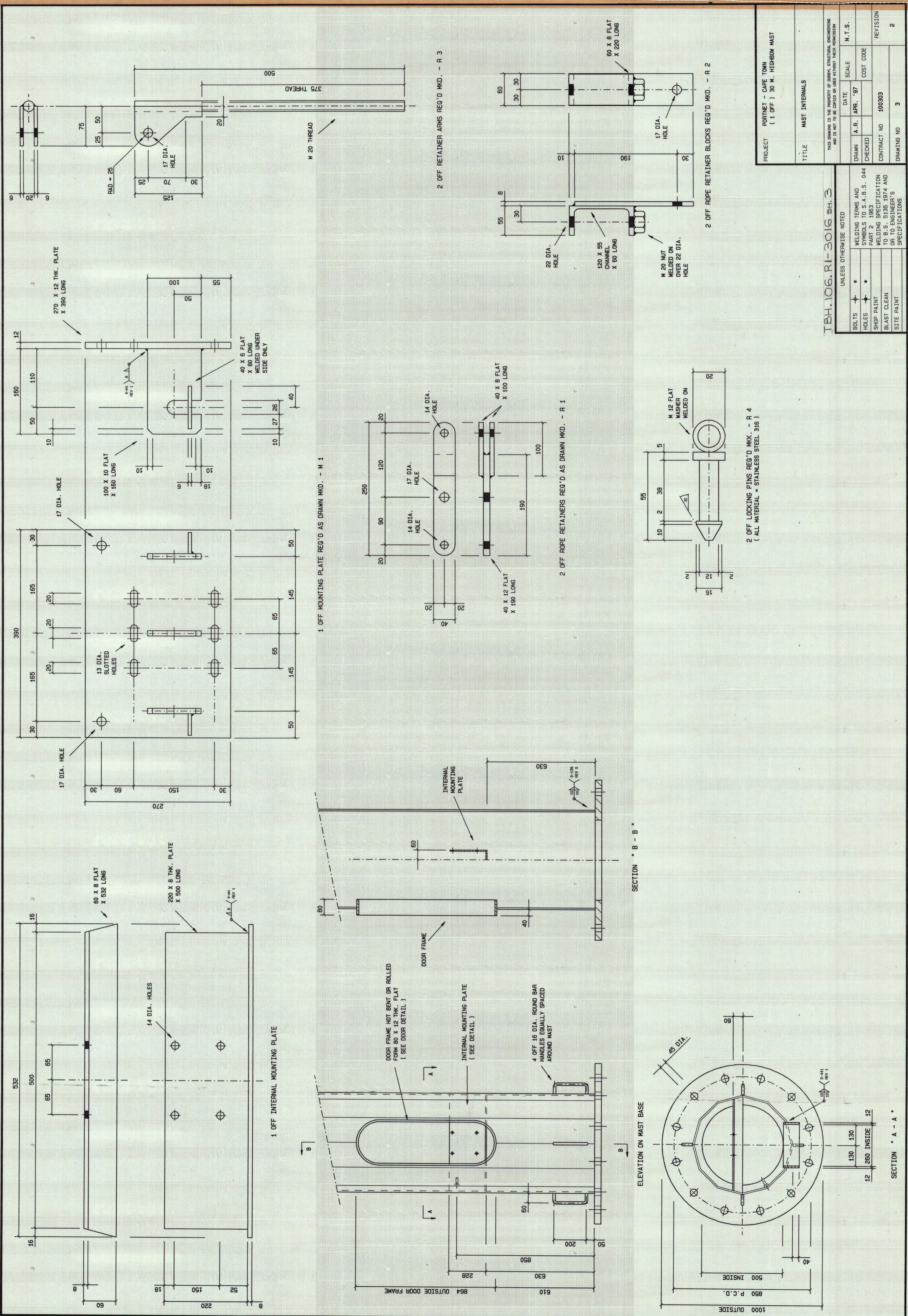
ELEVATION ON MAST



PROJECT	PORTNET - CAPE TOWN (L OFF) 30 M. HIGHBOW MAST BASE SECTION	DATE	APR. '97	SCALE	N.T.S.
TITLE	DOOR DETAILS	CHECKED		COST CODE	
<small>THIS DRAWING IS THE PROPERTY OF DOORVAL STRUCTURAL ENGINEERING AND IS NOT TO BE COPIED OR USED WITHOUT THEIR PERMISSION</small>			CONTRACT NO.	100303	REVISION
				DRAWING NO.	2

TBH.106.R1-3016 SH-2

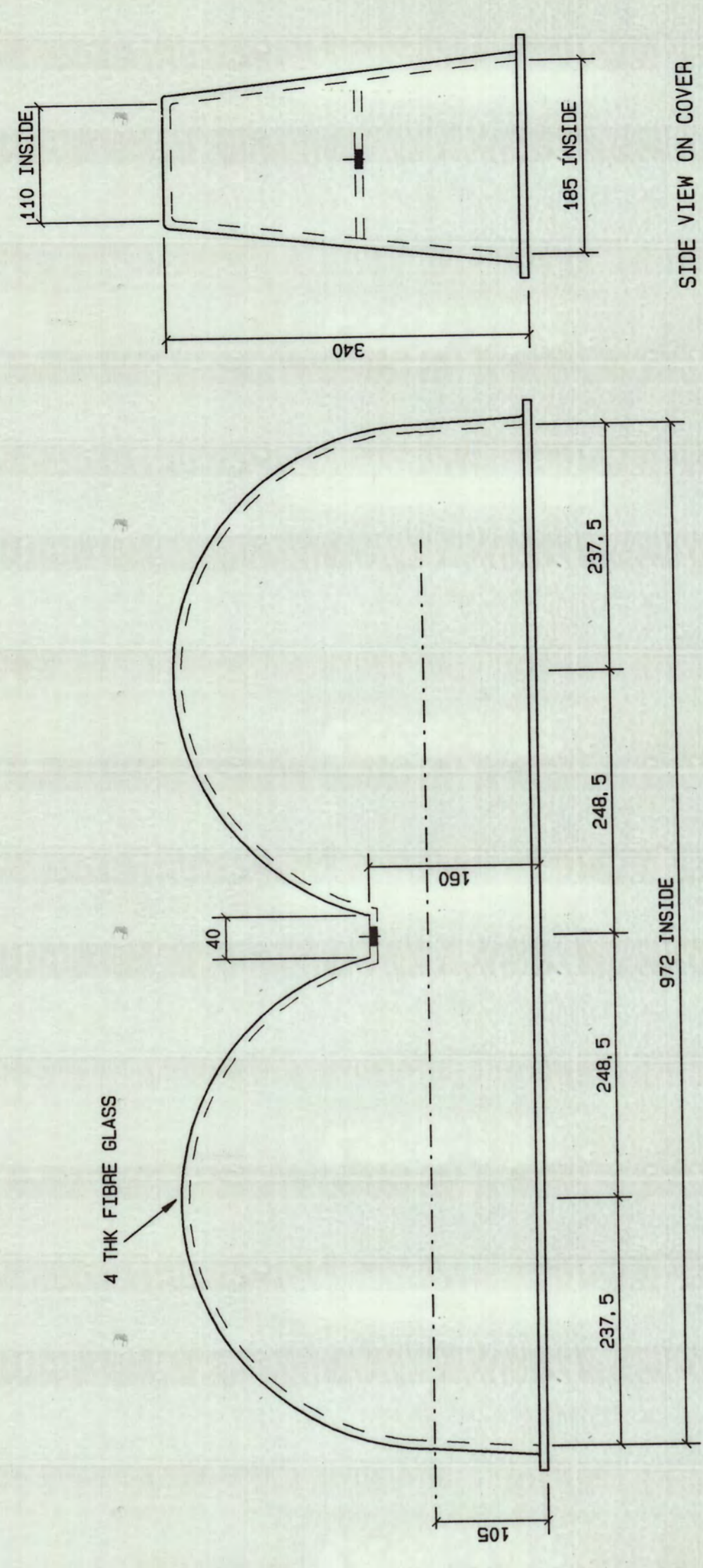
UNLESS OTHERWISE NOTED		WELDING TERMS AND SYMBOLS TO A.S. 044	
BOLTS	*	WELDS	* TO S.S. 1963
HOLES	*	PARTS	* TO S.S. 1963
SHOP PAINT		WELDING SPECIFICATION	TO B.S. 5135 1974 AND
BLAST CLEAN		OR TO ENGINEER'S SPECIFICATIONS	
SITE PAINT			



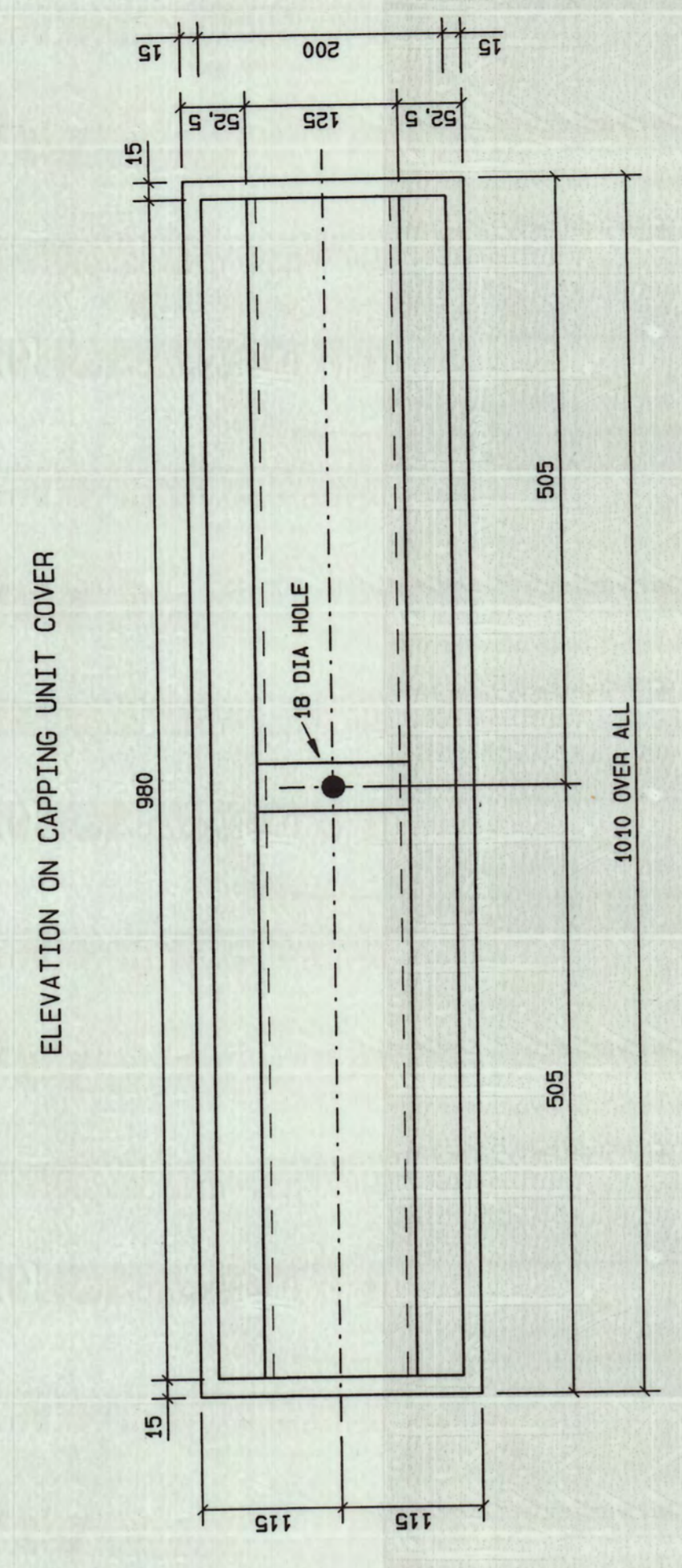
PROJECT	PROJNET - CASE TOWN (1 OFF) 30 M. HIGHBOW MAST
TITLE	MAST INTERNALS
THIS DRAWING IS THE PROPERTY OF CORNER STRUCTURAL ENGINEERING AND IS NOT TO BE COPIED OR REPRODUCED WITHOUT THEIR PERMISSION	
DRAWN	A. R.
CHECKED	A. R.
DATE	APR. '97
SCALE	N.T.S.
COST CODE	
CONTRACT NO	100303
REVISION	
DRAWING NO	3

TBH. 106. R1-3016 SH.3

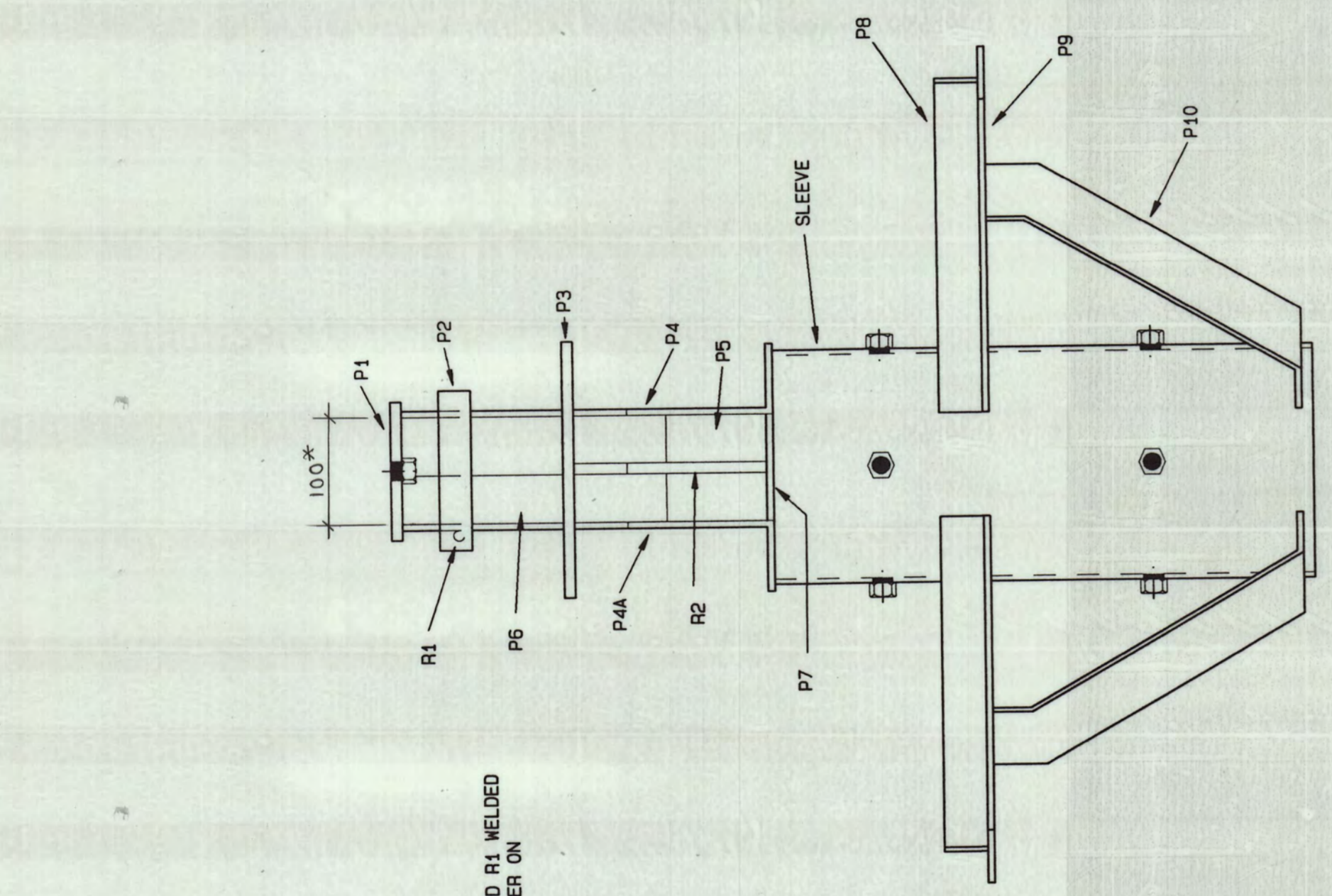
UNLESS OTHERWISE NOTED	
BOLTS	*
Holes	*
SHOP PAINT	*
BLAST CLEAN	*
SITE PAINT	*
WELDING TERMS AND SYMBOLS TO S.A.B.S. 044	
PART 2 1983	
WELDING SPECIFICATION	
MIL-W-88389 (REV. 1974) AND	
OR TO ENGINEER'S SPECIFICATIONS	



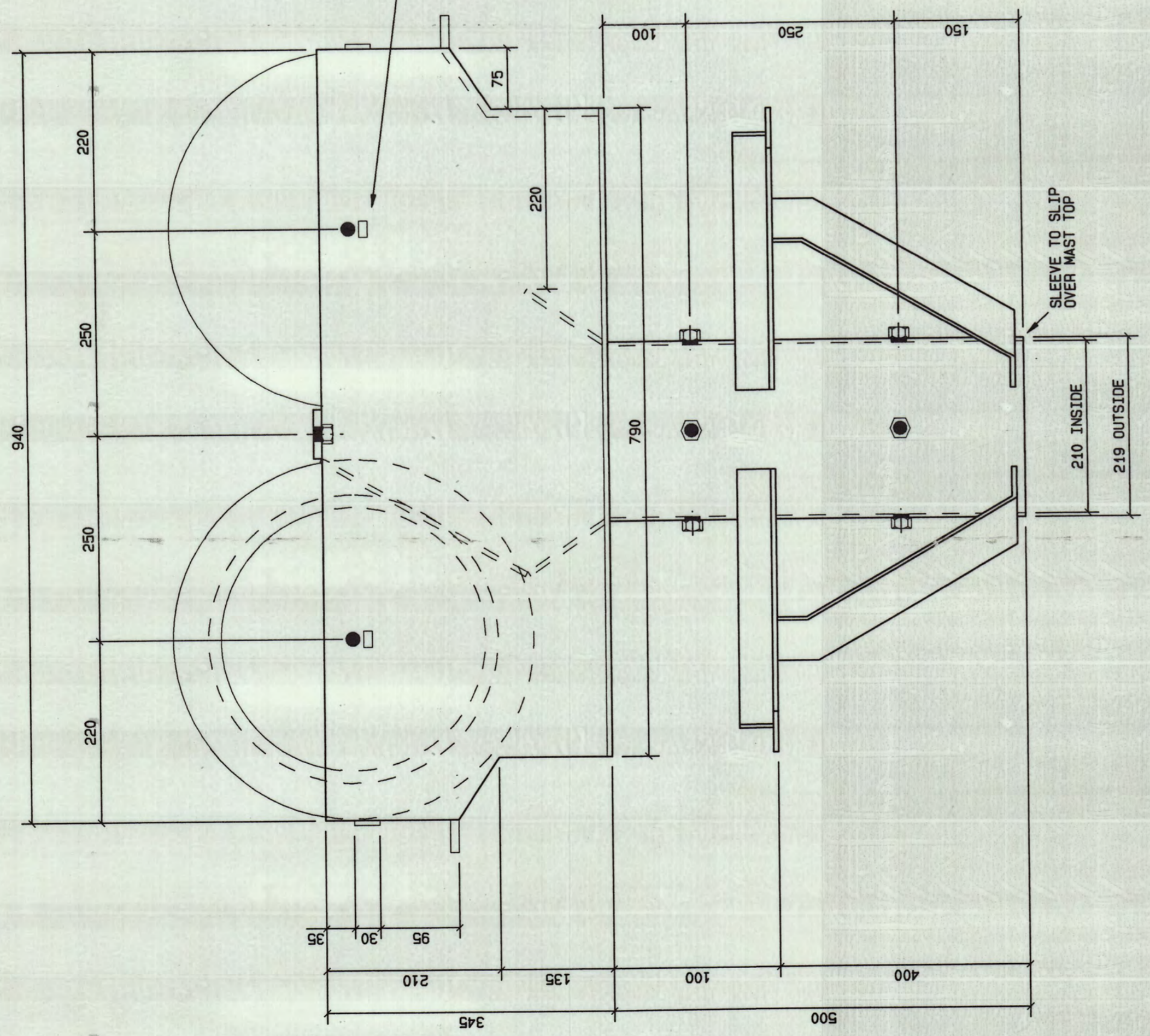
SIDE VIEW ON COVER



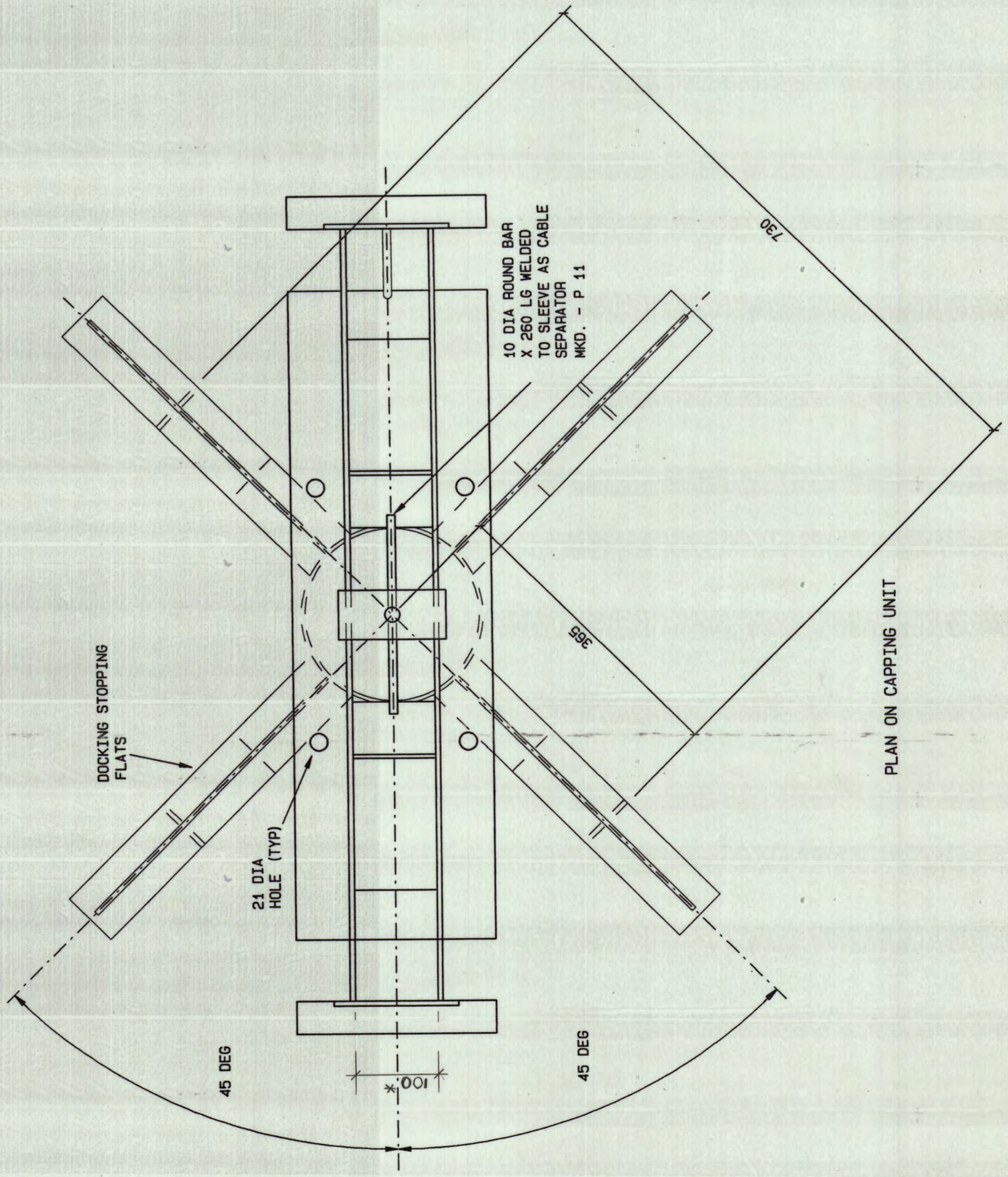
PLAN ON COVER



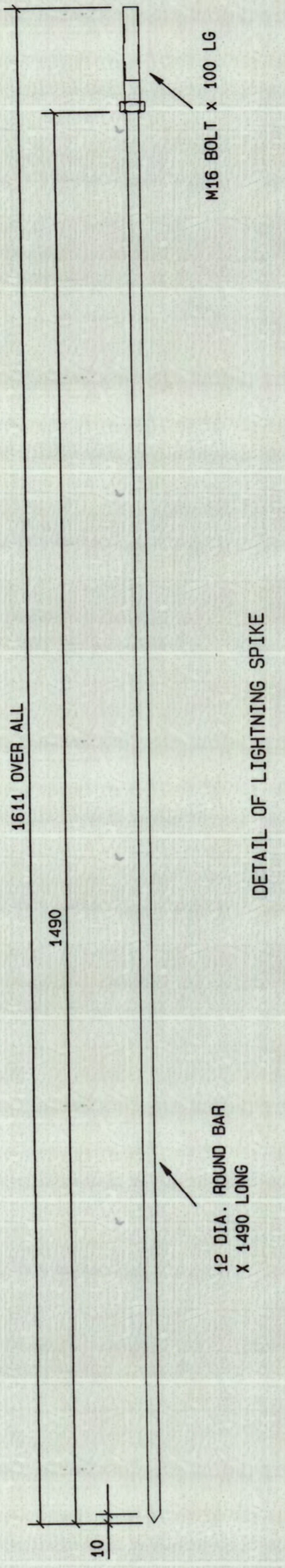
SIDE VIEW ON CAPPING UNIT



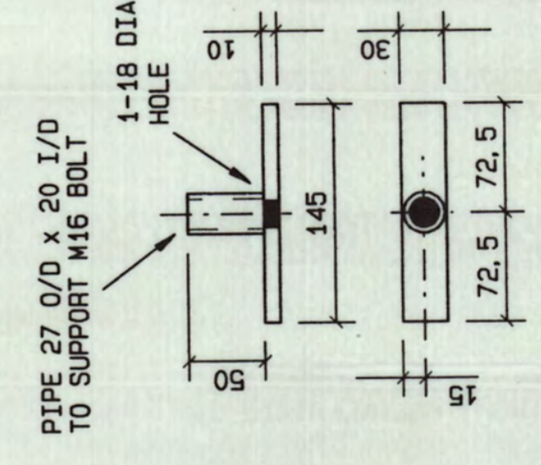
ELEVATION ON CAPPING UNIT (1-HEAD PER MAST)



PLAN ON CAPPING UNIT



DETAIL OF LIGHTNING SPIKE



DETAIL OF SPIKE SUPPORT

PROJECT POPINET - CAPE TOWN  
30 M. HUBBARD MAST

TITLE CAPPING UNIT DETAILS

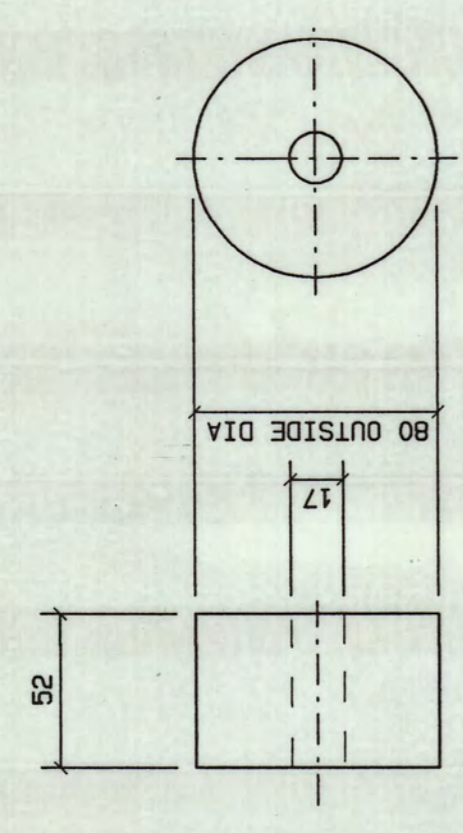
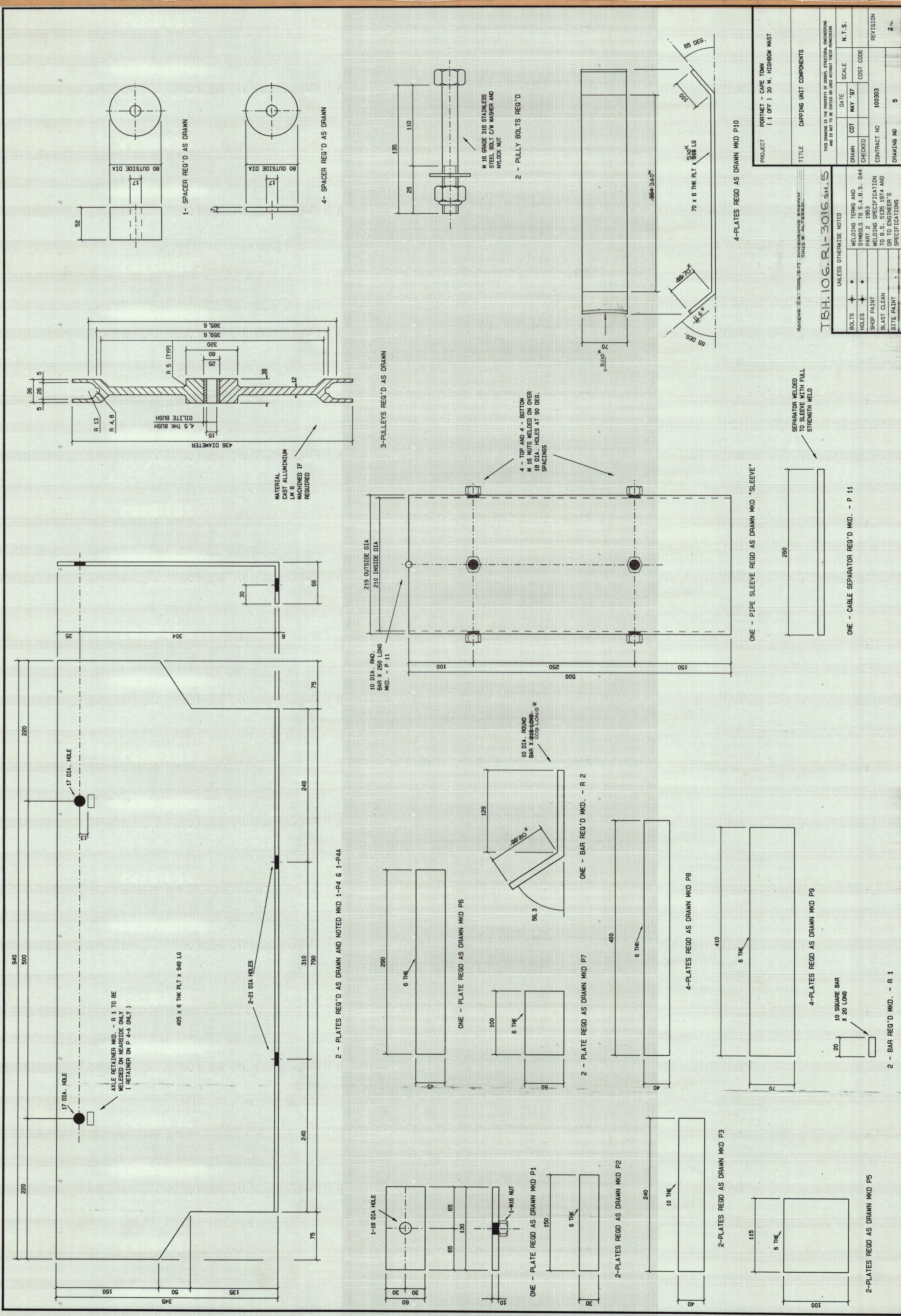
UNLESS OTHERWISE NOTED

BOLTS	*	WELDING TERMS AND SYMBOLS TO S.A.B.S. 044	DATE	SCALE	N.T.S.
HOLES	*	PART 2 1983	APR. '97	NOV. '96	
SHOP PAINT		WELDING SPECIFICATION TO B.S. 1171:1991 AND B.S. 1171:1991 AND ENGINEER'S SPECIFICATIONS	CHECKED	CONTRACT NO	REVISION
BLAST CLEAN				100393	
SITE PAINT				DRAWING NO	2

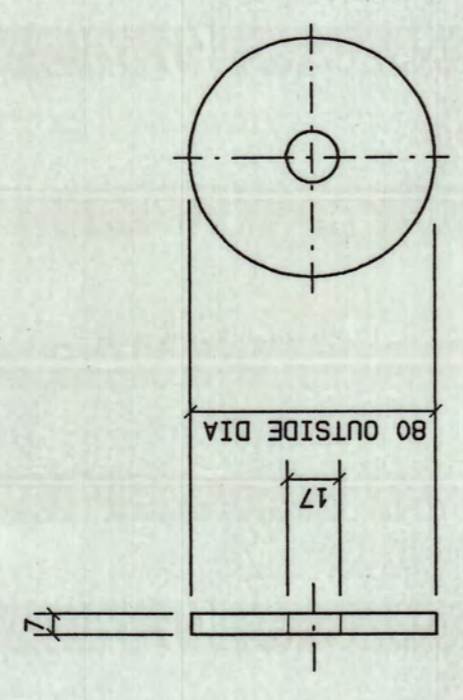
AMEND: 20.02.04-8-17 DIMENSIONS SHOWN THUS \* ADDED.

TBH.106.R1-3016 SH.4

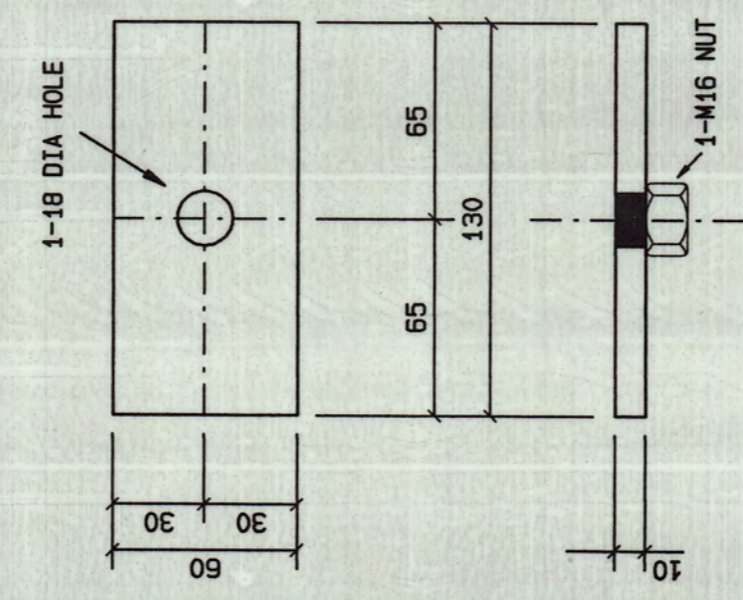
NOTE:  
- ALL WELDING 6 mm CFW ACCORDING TO CORREY WELDING PROCEDURE S - 441 REV. 1



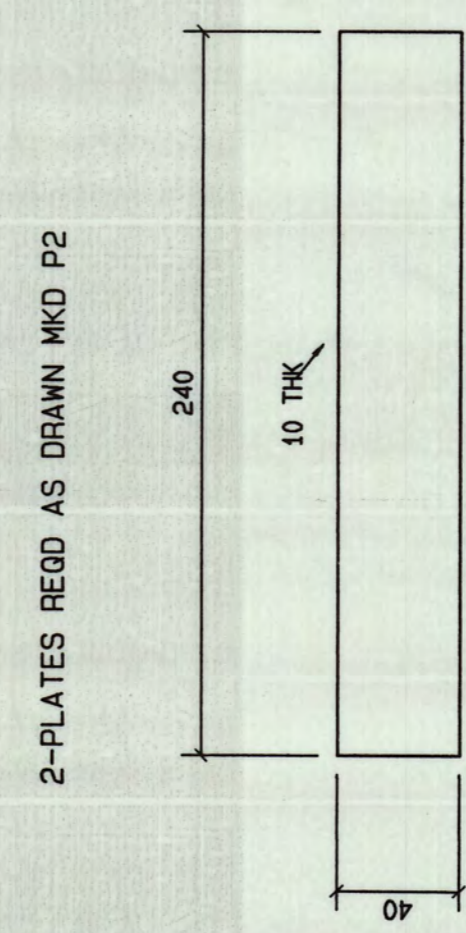
1- SPACER REQ'D AS DRAWN



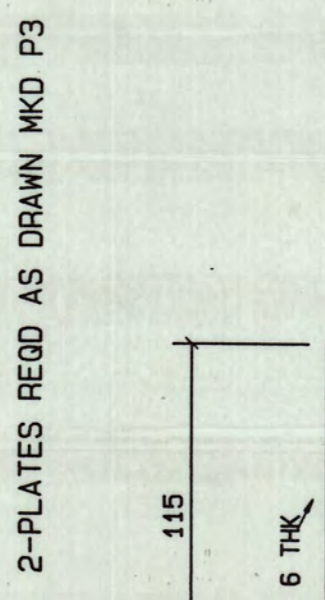
4- SPACER REQ'D AS DRAWN



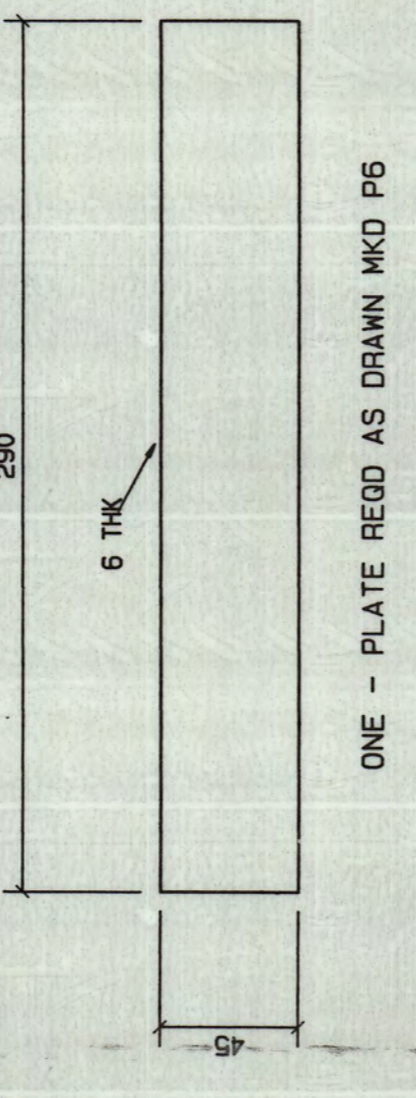
ONE - PLATE REQ'D AS DRAWN MKD P1



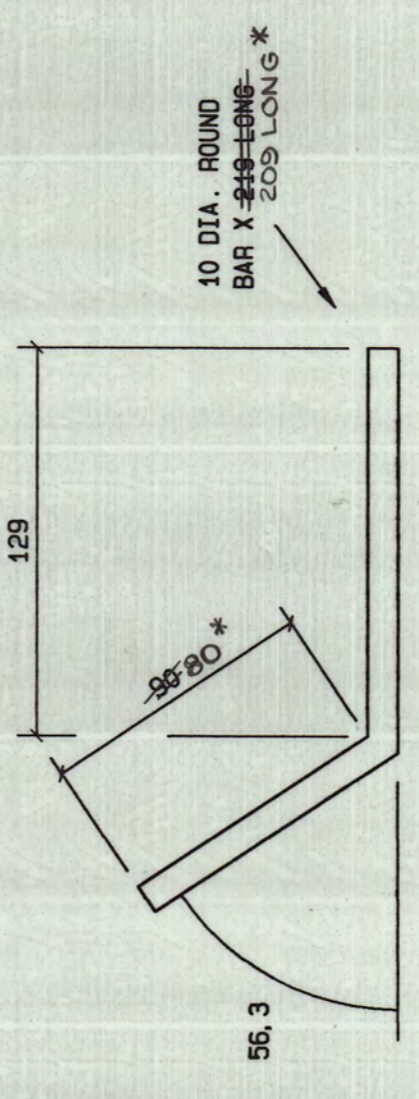
2-PLATES REQ'D AS DRAWN MKD P2



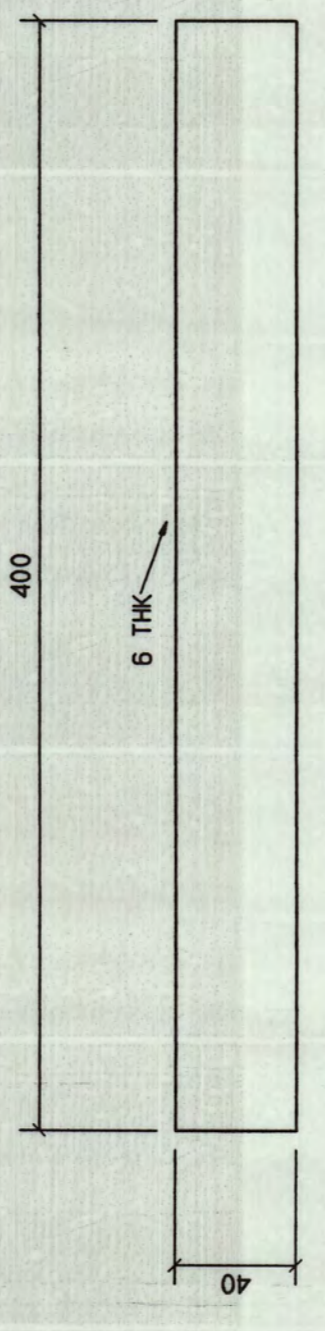
2-PLATES REQ'D AS DRAWN MKD P3



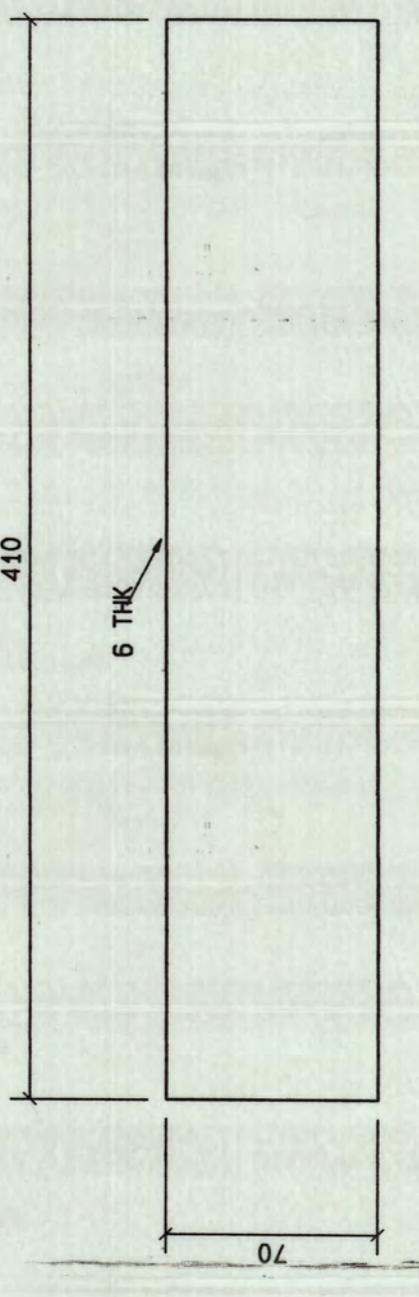
ONE - PLATE REQ'D AS DRAWN MKD P6



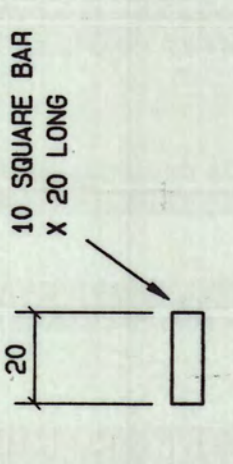
ONE - BAR REQ'D MKD. - P 7



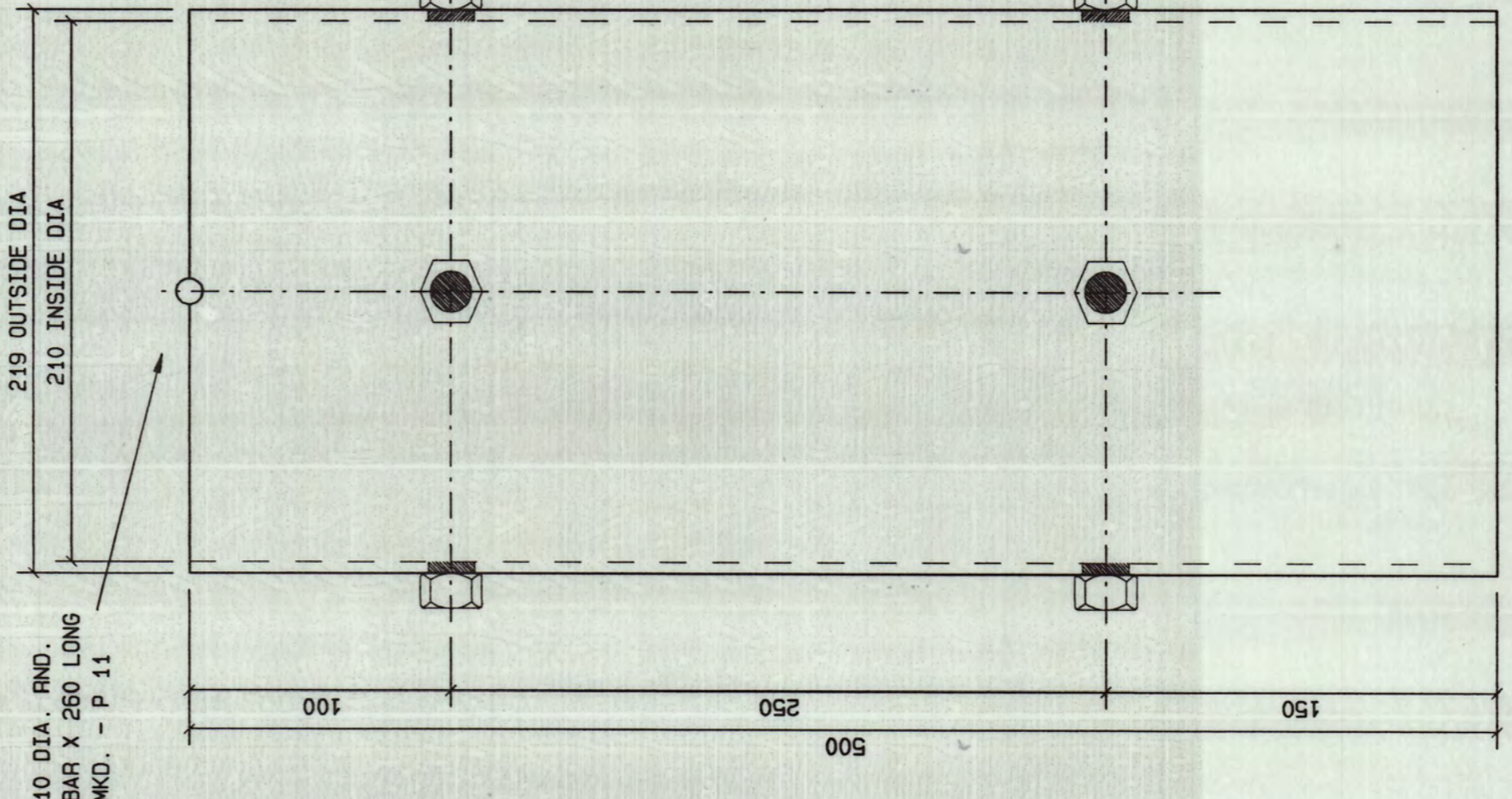
4-PLATES REQ'D AS DRAWN MKD P8



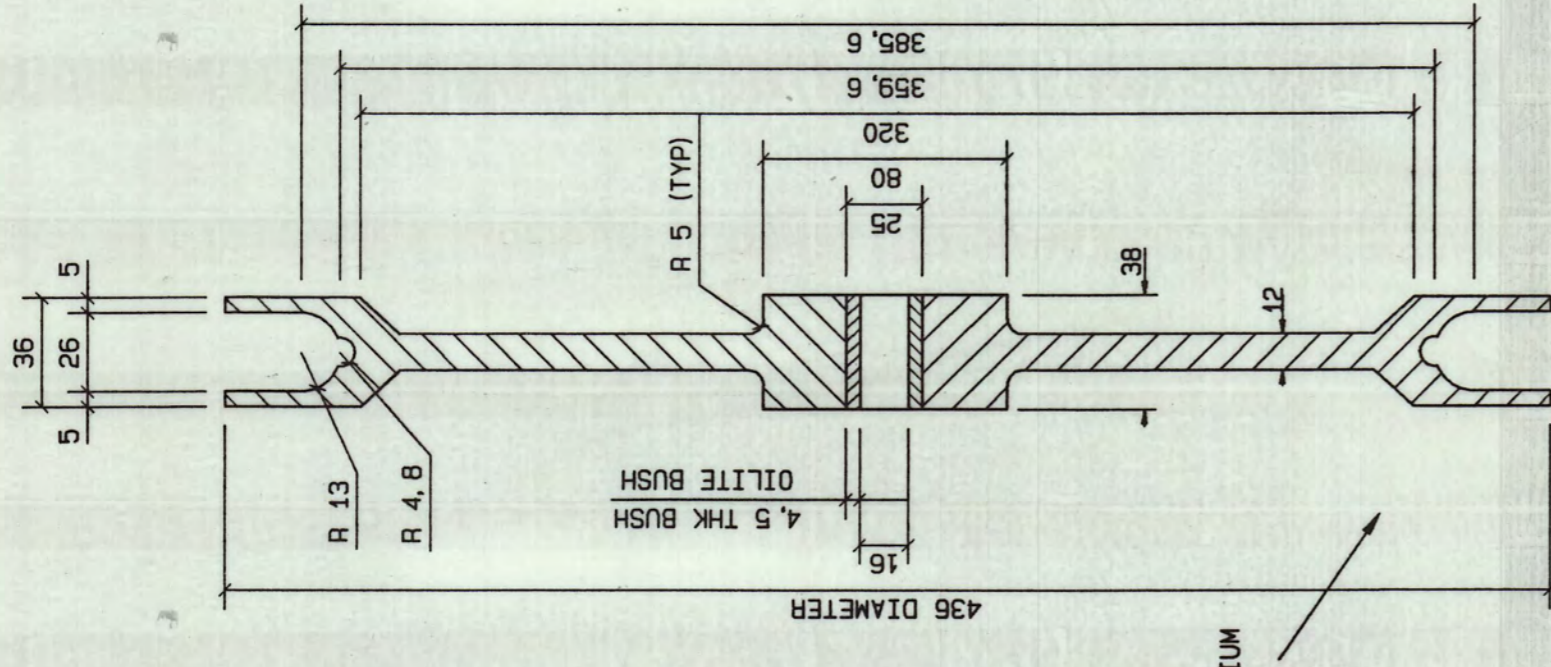
4-PLATES REQ'D AS DRAWN MKD P9



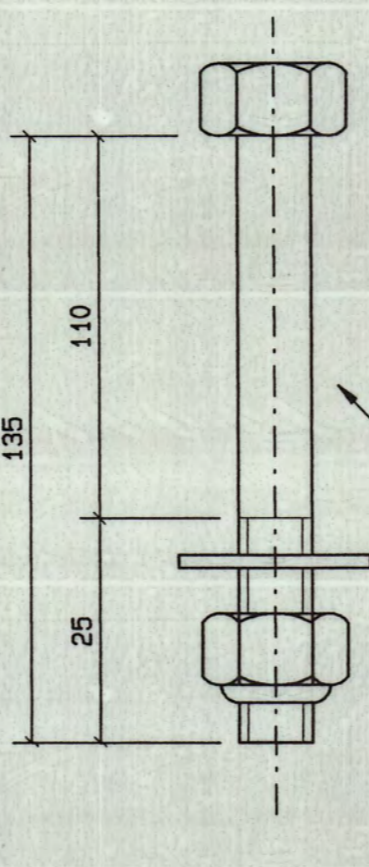
2 - BAR REQ'D MKD. - P 10



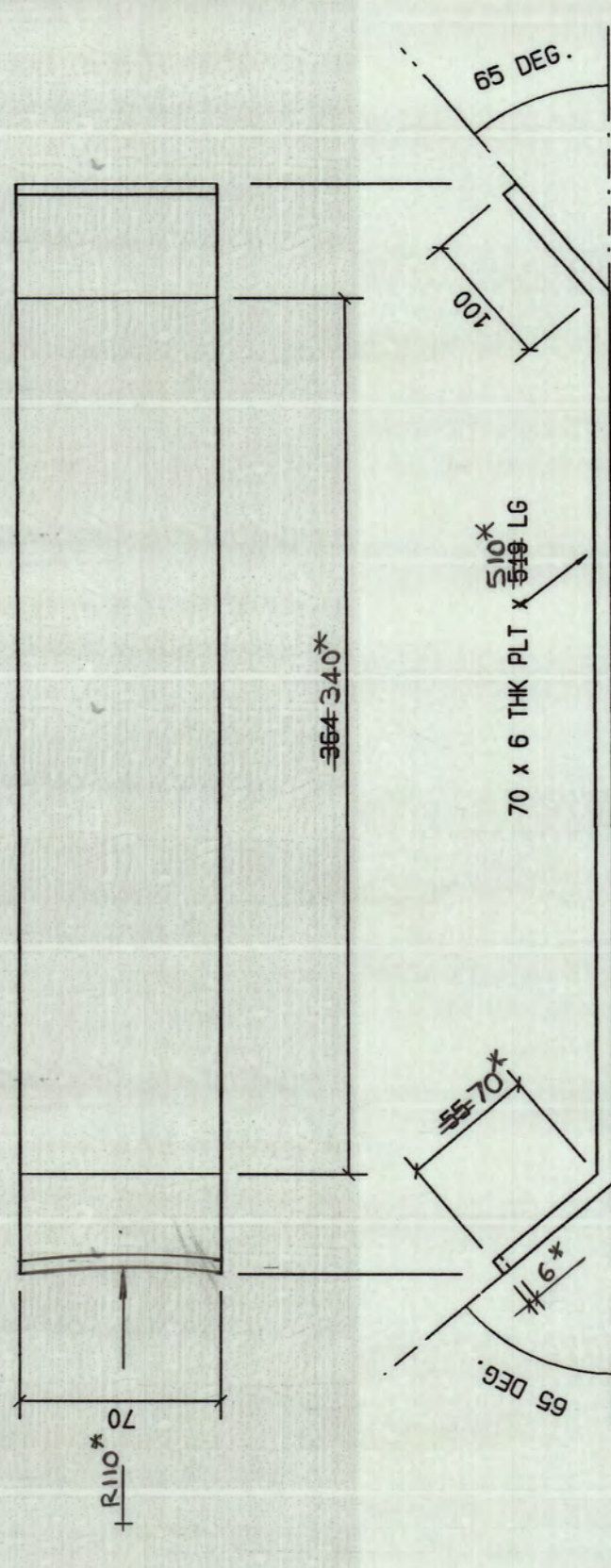
ONE - PIPE SLEEVE REQ'D AS DRAWN MKD "SLEEVE"



3-PULLEYS REQ'D AS DRAWN



2 - PULLY BOLTS REQ'D



4-PLATES REQ'D AS DRAWN MKD P14

MATERIAL CAST ALUMINIUM LM 6 MACHINED IF REQUIRED

4 - TOP AND 4 - BOTTOM M 16 NUTS WELDED ON OVER 18 DIA. HOLES AT 90 DEG. SPACINGS

SEPARATOR WELDED TO SLEEVE WITH FULL STRENGTH WELD

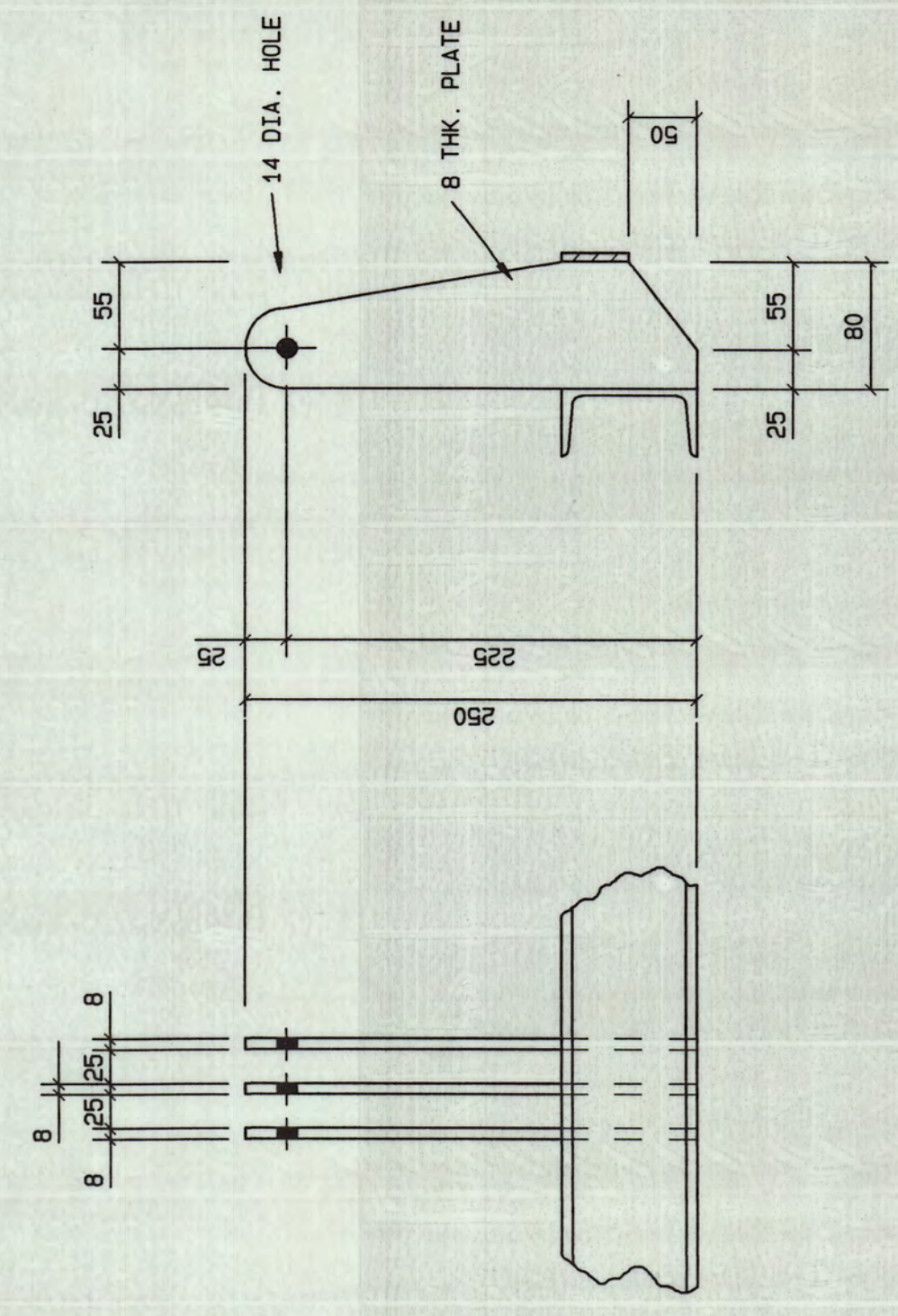
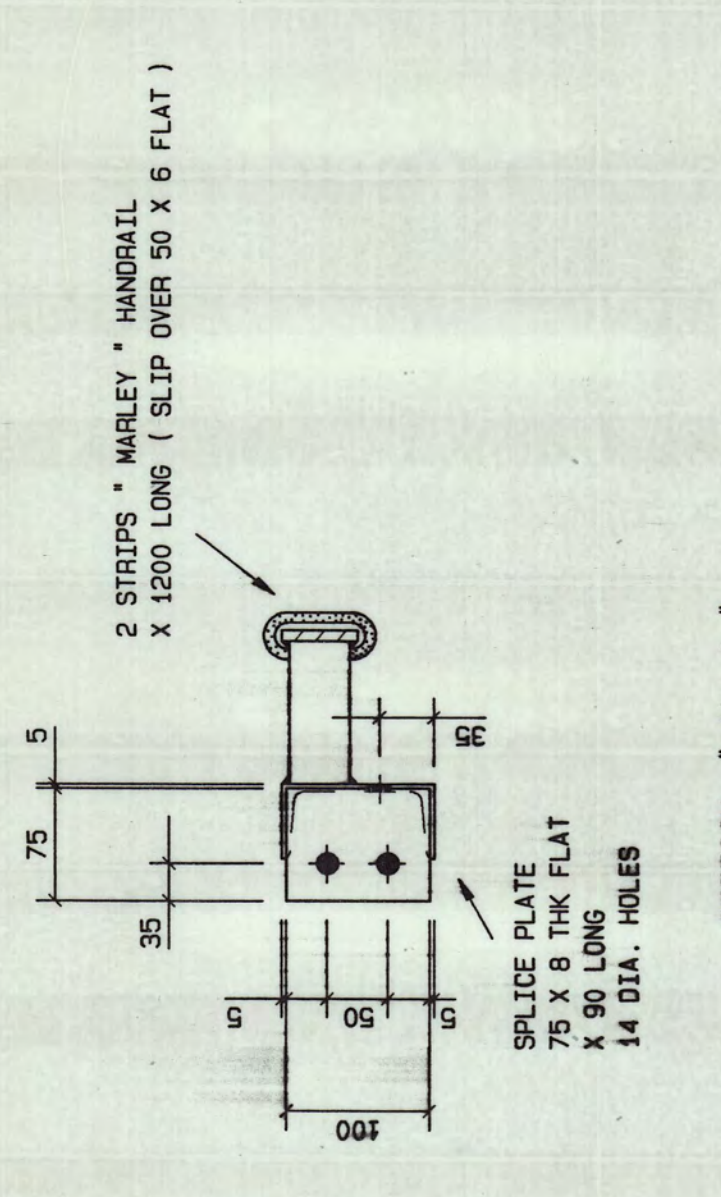
ONE - CABLE SEPARATOR REQ'D MKD. - P 11

PROJECT		PROJNET - CAPE TOWN (1 OFF) 30 M. HIGHBROW MAST	
TITLE		CAPPING UNIT COMPONENTS	
THIS DRAWING IS THE PROPERTY OF DEWEL STRUCTURAL ENGINEERING AND IS NOT TO BE COPIED OR USED WITHOUT THEIR PERMISSION			
DRAWN	DATE	SCALE	N.T.S.
CHECKED	MAY '97	COST CODE	
CONTRACT NO	100303	REVISION	
DRAWING NO	5		2

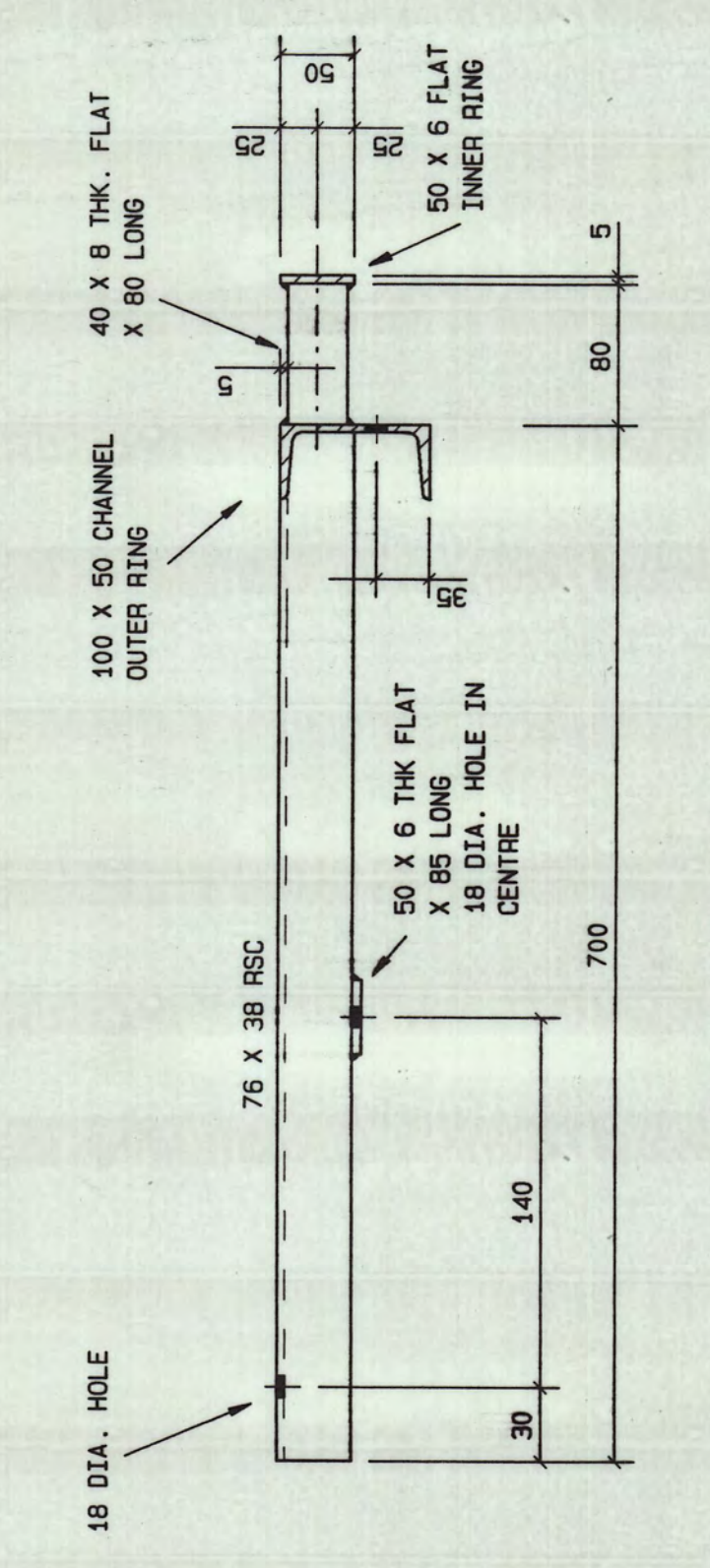
UNLESS OTHERWISE NOTED	
BOLTS	* WELDING TERMS AND SYMBOLS A.B.S. 044
HOLES	* SHOP PAINT
BLAST CLEAN	TO B.S. 5135, 1974 AND OR TO ENGINEER'S SPECIFICATIONS
SITE PAINT	

TBH.106. R1-3016 SH.5

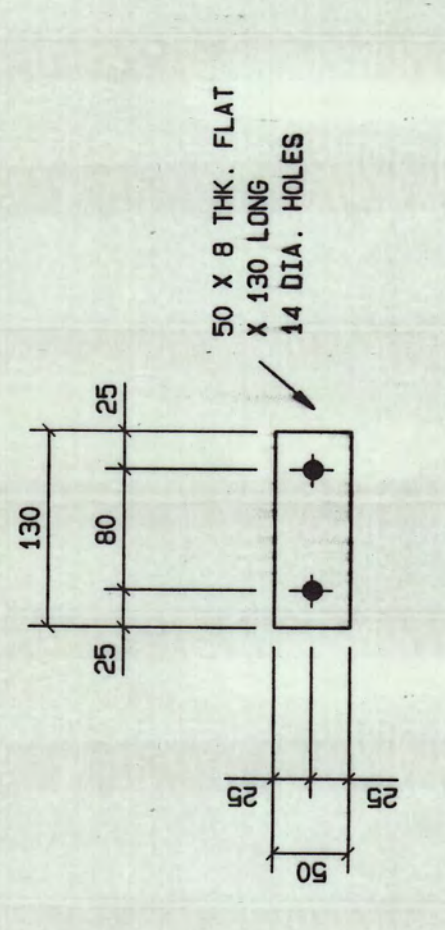
UNLESS OTHERWISE NOTED DIMENSIONS SHOWN THIS IS ALTERED.



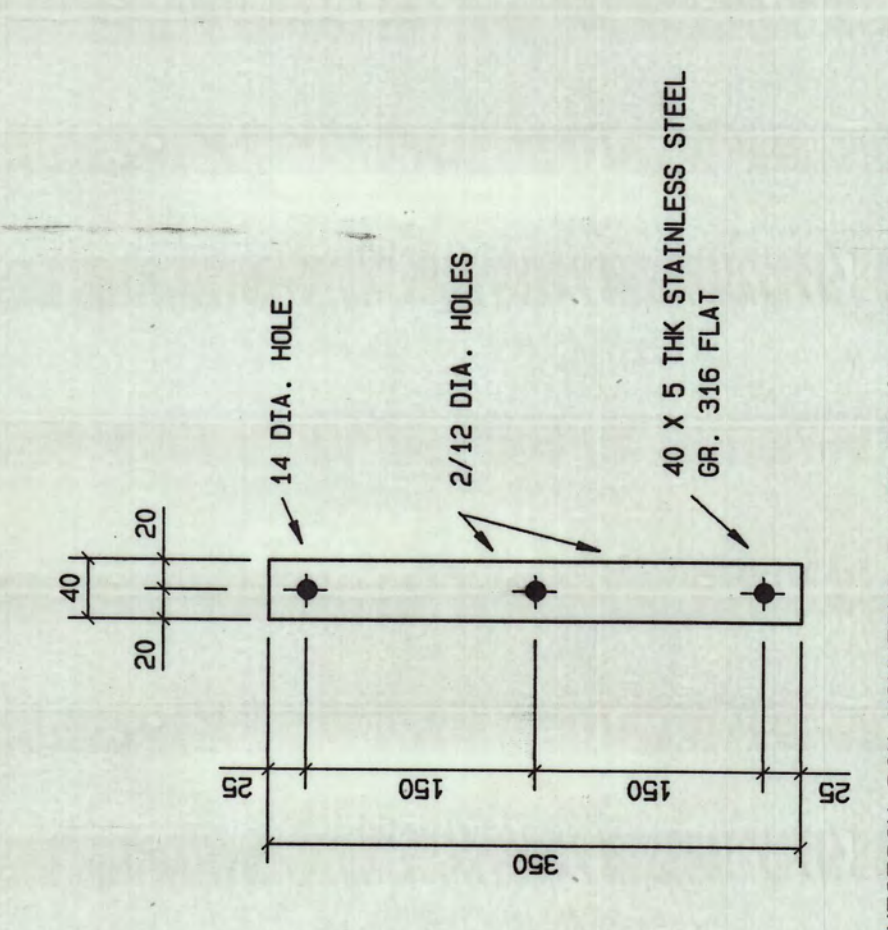
NOTE:  
- ALL MATERIAL - 300 WA STEEL  
- ALL WELDING - 6 mm CONT. FILLET  
- WELDS TO DORBYL WELDING PROCEDURE  
- S-441 REV. 1  
- ALL STEELWORK TO BE H.D. GALV'D TO  
- SABS 763  
- RING TO TAKE 20 OFF LASCAN L14 ST  
- FLOODLIGHTS MOUNTING POSITION  
- 10 IN HANGING POSITION



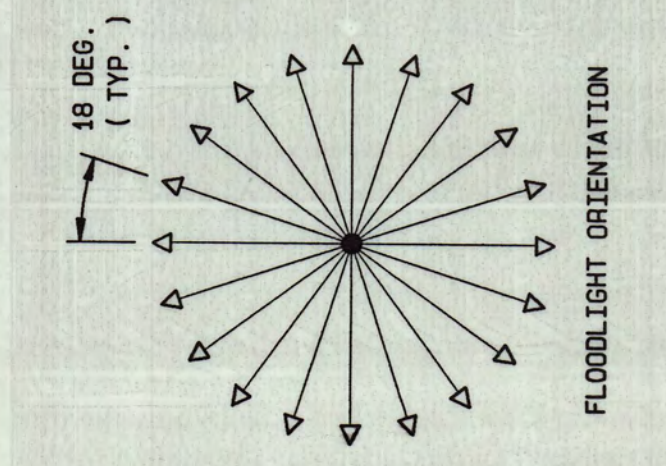
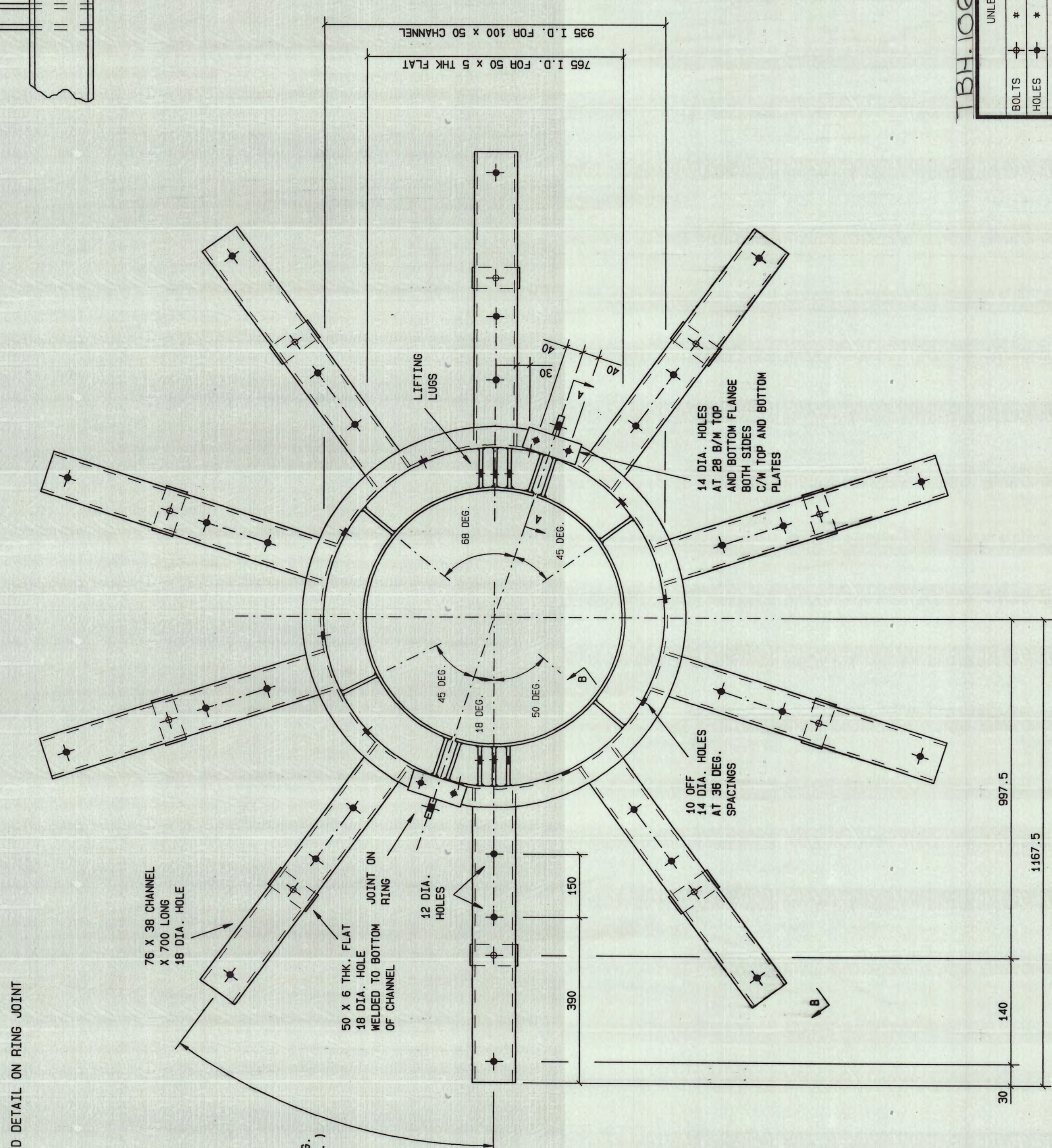
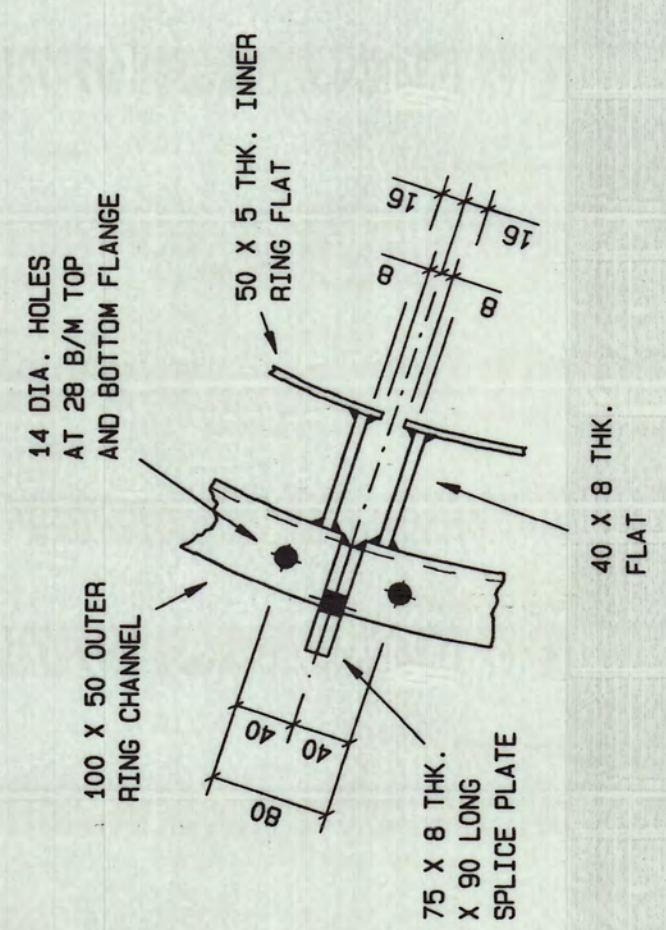
SECTION "B - B"  
(10 CHANNEL SPACINGS REQ'D PER RING)



10 CONNECTION BOX MOUNTING FLATS REQ'D PER RING MKD. - MF 1



10 CONNECTION BOX MOUNTING FLATS REQ'D PER RING MKD. - MF 1



LASCAN L 14 ST  
400 W FLOODLIGHT

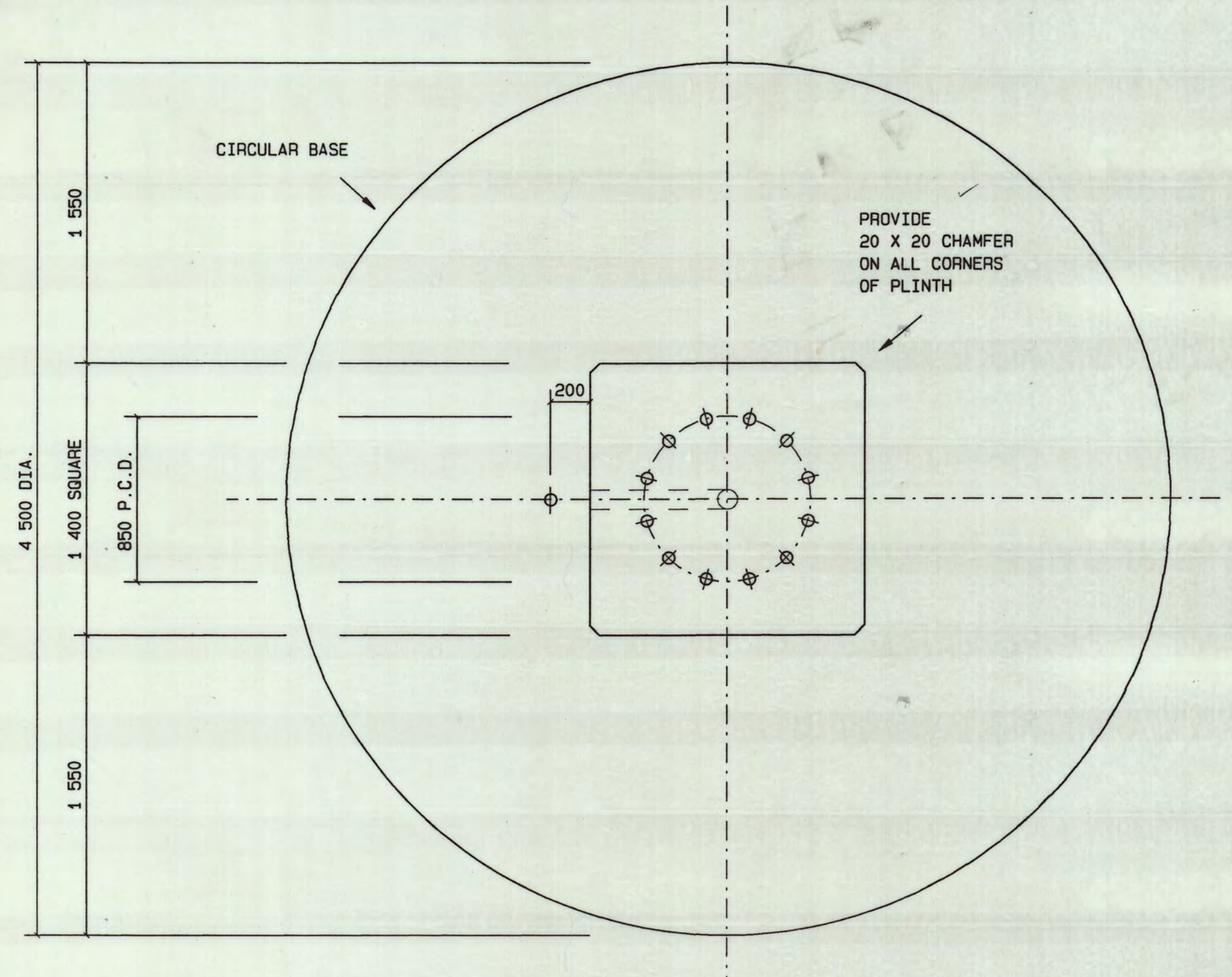
FLOODLIGHT IN STANDING POSITION  
FLOODLIGHT IN HANGING POSITION

PLAN OF FLOODLIGHT ORIENTATION ON RING

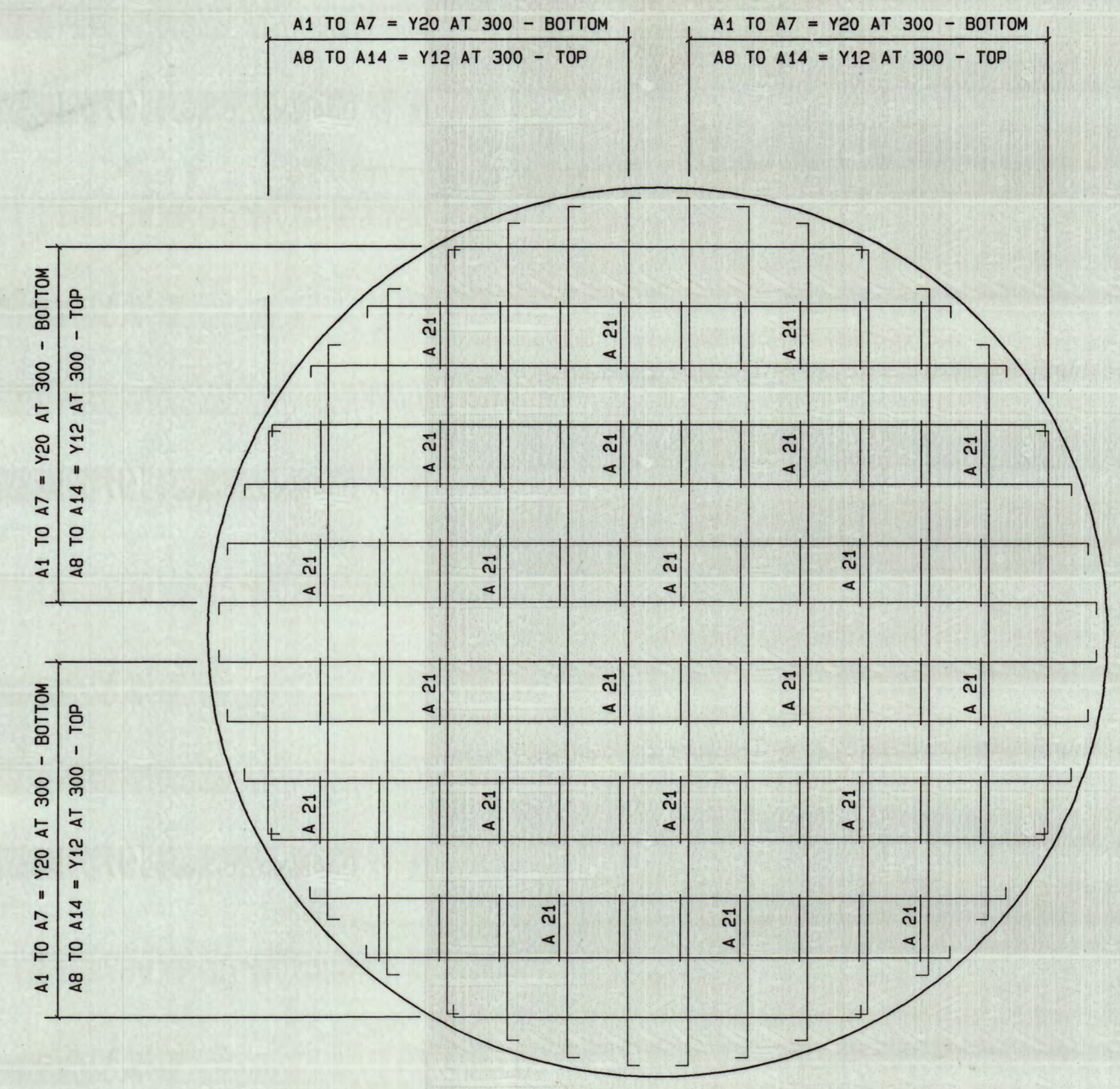
PROJECT	PORTNET - CAPE TOWN 30 M. HIGHBOOM MAST
TITLE	RING DETAILS
THIS DRAWING IS THE PROPERTY OF DORBYL STRUCTURAL ENGINEERING AND IS NOT TO BE COPIED OR USED WITHOUT THEIR PERMISSION	
DRAWN	A.R.
CHECKED	APR. '97
DATE	SCALE
	N.T.S.
CONTRACT NO	100303
DRAWING NO	6
REVISION	2

UNLESS OTHERWISE NOTED	
BOLTS	*
HOLES	*
WELDING TERMS AND SYMBOLS TO S.A.B.S.	044
CHECKED	PART 2 1983
WELDING SPECIFICATION TO B.S.	5135 1974 AND
SITE ENGINEER'S SPECIFICATIONS	

ONE RING REQ'D PER MAST MKD. - R 1

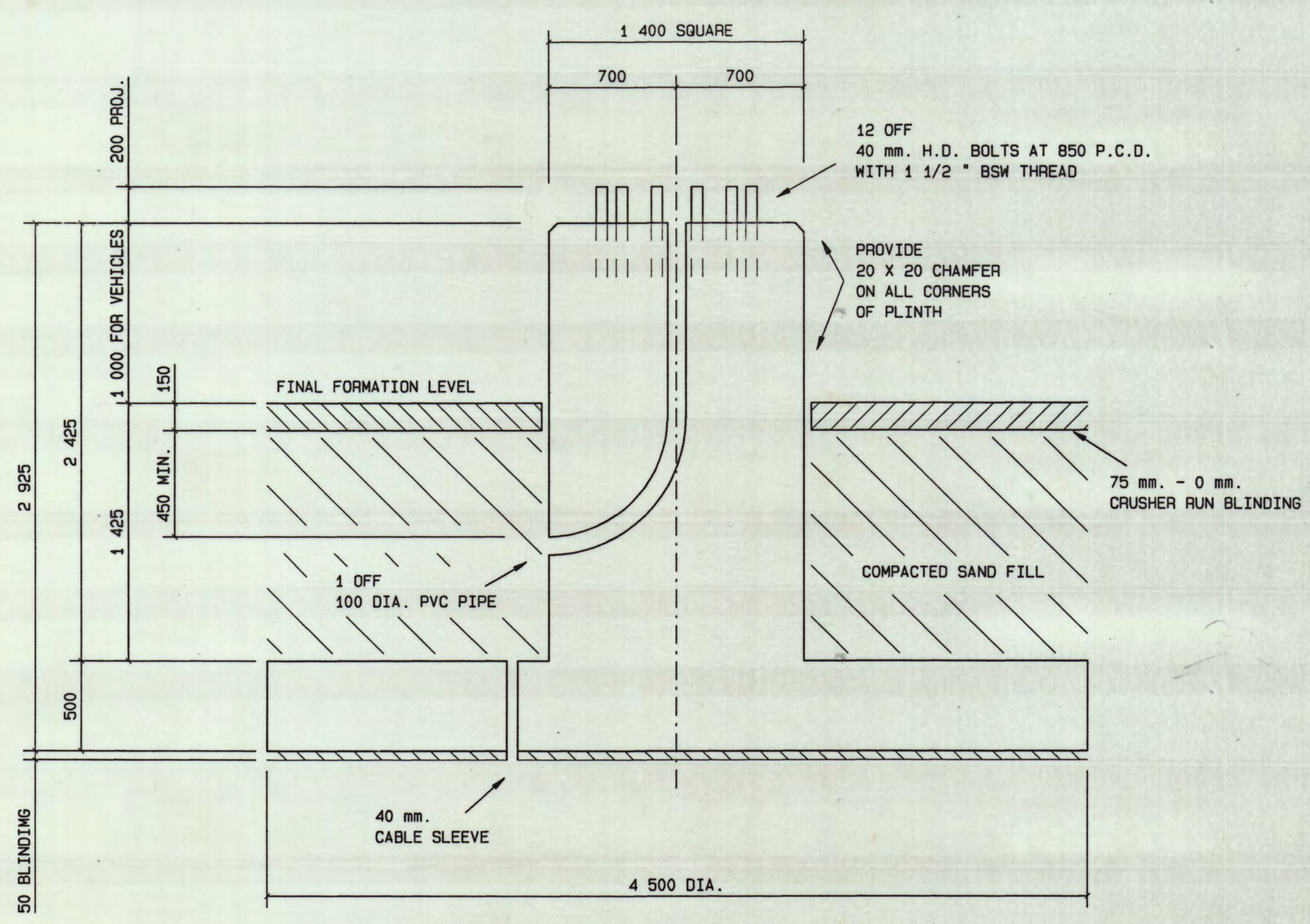


PLAN ON FOUNDATION

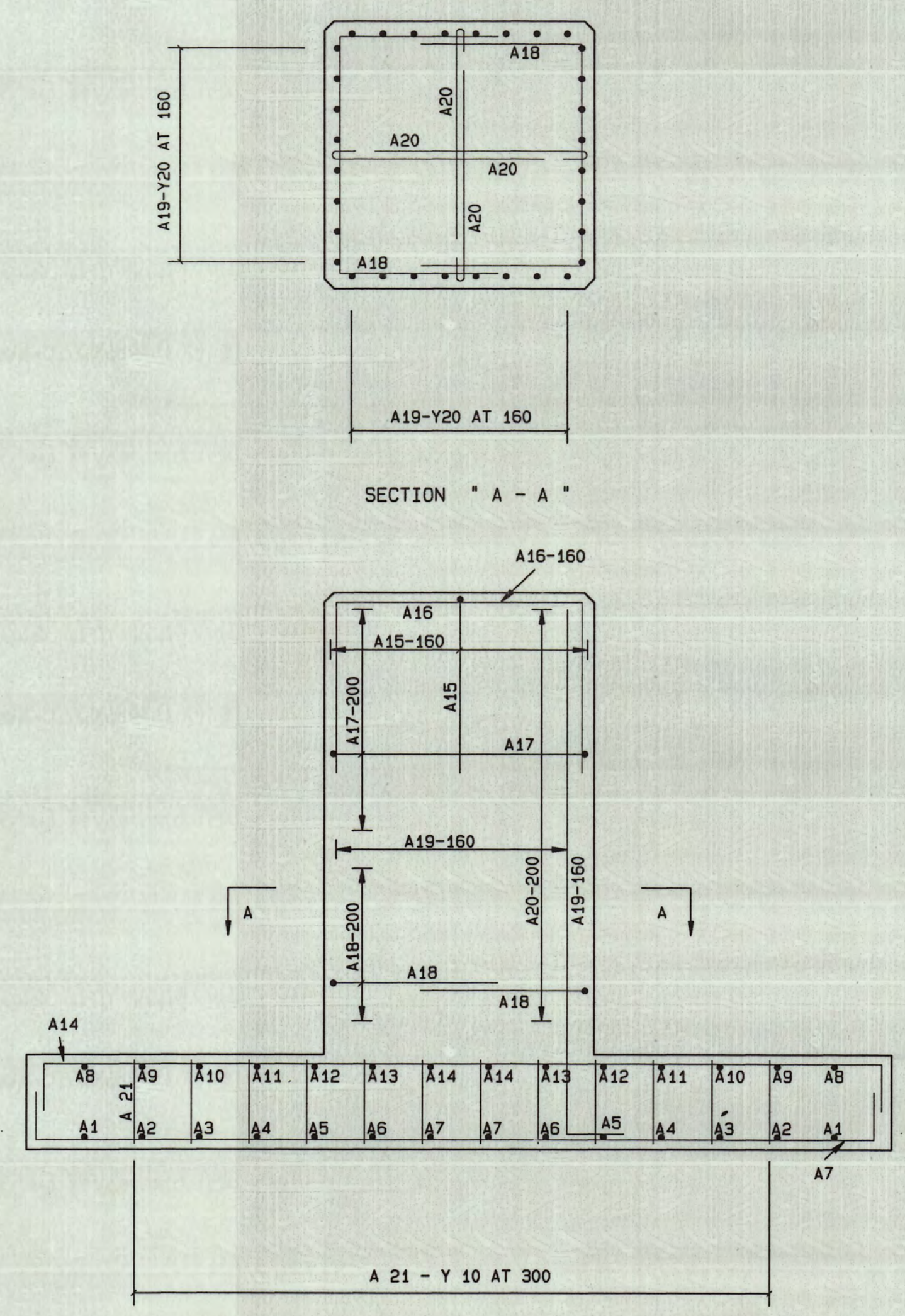


PLAN ON FOUNDATION BASE SHOWING REINFORCING

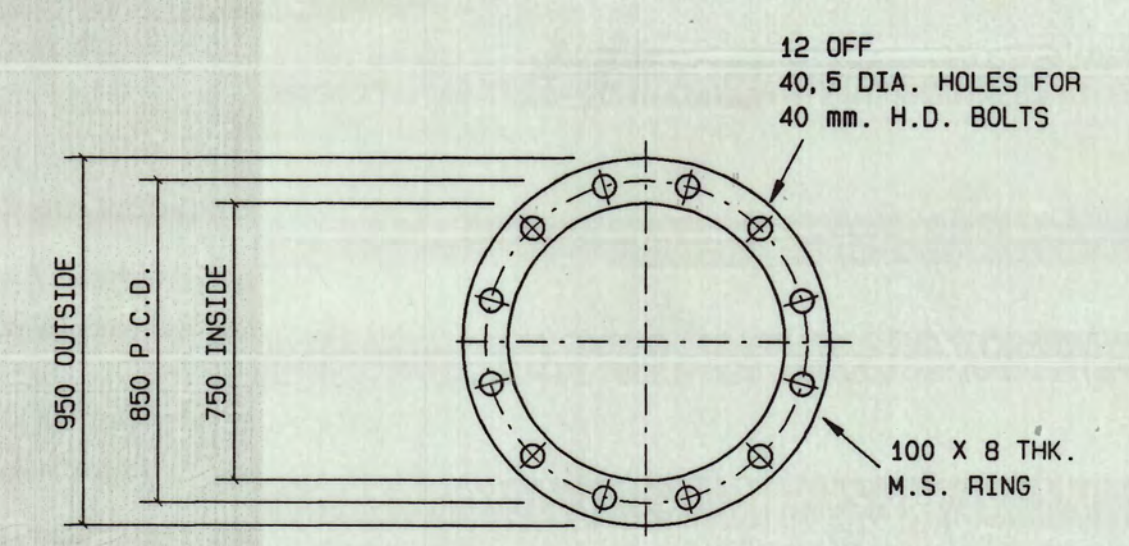
REINFORCING LIST											
MARK	DESCRIPTION	DIA.	A	B	C	NO. OFF FOR ONE	TOTAL	TOTAL LENGTH	MASS		
A 1		Y 20	300	2000		4		2500	24.66		
A 2		Y 20	300	2900		4		3400	33.54		
A 3		Y 20	300	3475		4		3975	39.21		
A 4		Y 20	300	3850		4		4350	42.91		
A 5		Y 20	300	4125		4		4625	45.62		
A 6		Y 20	300	4300		4		4800	47.35		
A 7		Y 20	300	4375		4		4875	48.09		
A 8		Y 12	300	2000		4		2550	9.06		
A 9		Y 12	300	2900		4		3450	12.25		
A 10		Y 12	300	3475		4		4025	14.30		
A 11		Y 12	300	3850		4		4400	15.63		
A 12		Y 12	300	4125		4		4675	16.61		
A 13		Y 12	300	4300		4		4850	17.23		
A 14		Y 12	300	4375		4		4925	17.50		
A 15		Y 20	900	1275		9		2975	66.03		
A 16		Y 20	900	1275		7		2975	51.35		
A 17		Y 12	950	1260		14		3100	38.54		
A 18		Y 12	1000	1260		10		3200	28.42		
A 19		Y 20	2780	300		32		3080	243.44		
A 20		Y 12	1000			48		1150	49.01		
A 21		Y 10	370	300		68		1250	52.36		
TOTAL MASS OF REINFORCING									913.11		



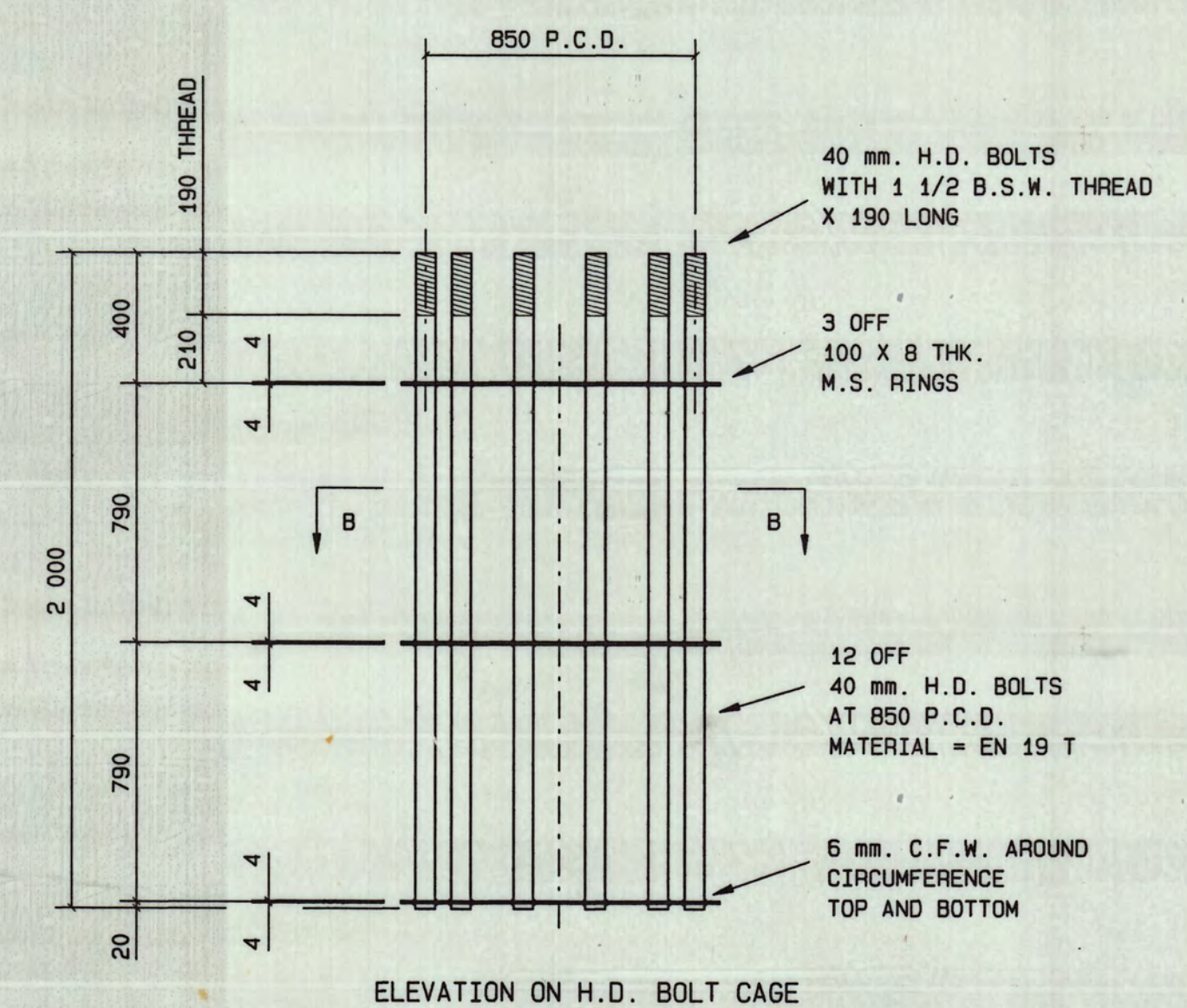
SECTION THRU ELEVATION OF FOUNDATION



SECTION THRU ELEVATION OF FOUNDATION SHOWING REINFORCING



SECTION "B - B"



ELEVATION ON H.D. BOLT CAGE

NOTE :

- ROUND DEFORMED HIGH TENSILE STEEL BARS TO SABS 920 CLASS 2 GRADE 2
- REINFORCING COVER = 50 mm. MINIMUM
- RADII OF ALL BENDS IN BARS ARE STANDARD
- DESIGN LOADS AT TOP OF PEDESTAL  
M = 720 kNm  
V = 30 kN  
P = 300 kN
- 40 M. LIGHTING MAST WITH DESIGN WIND SPEED OF 120 KM/H
- MAX. FOUNDATION BEARING PRESSURE = 250 kPa
- FOUNDATION MATERIAL TO BE APPROVED BY ENGINEER BEFORE BLINDING IS PLACED
- CONCRETE TO HAVE CRUSHING STRENGTH OF 30 MPa AT 28 DAYS
- HOLDING DOWN BOLTS TO BE HOT DIP GALV'D FOR TOP 300 mm. MIN.
- FOR STANDARDS JOINT DETAILS REFER S.A.R. SPECIFICATION - E 8/8 ( 1975 )

PROJECT PORTNET - CAPE TOWN  
( 1 OFF ) 30 M. HIGHBOW MAST

TITLE FOUNDATION DETAILS

THIS DRAWING IS THE PROPERTY OF DORBYL STRUCTURAL ENGINEERING AND IS NOT TO BE COPIED OR USED WITHOUT THEIR PERMISSION

UNLESS OTHERWISE NOTED		DATE	SCALE	N.T.S.
BOLTS	+	MAY '98		
HOLES	+			
SHOP PAINT				
BLAST CLEAN				
SITE PAINT				

DRAWN	CHECKED	CONTRACT NO	DRAWING NO	REVISION
A.R.		100303	7	0